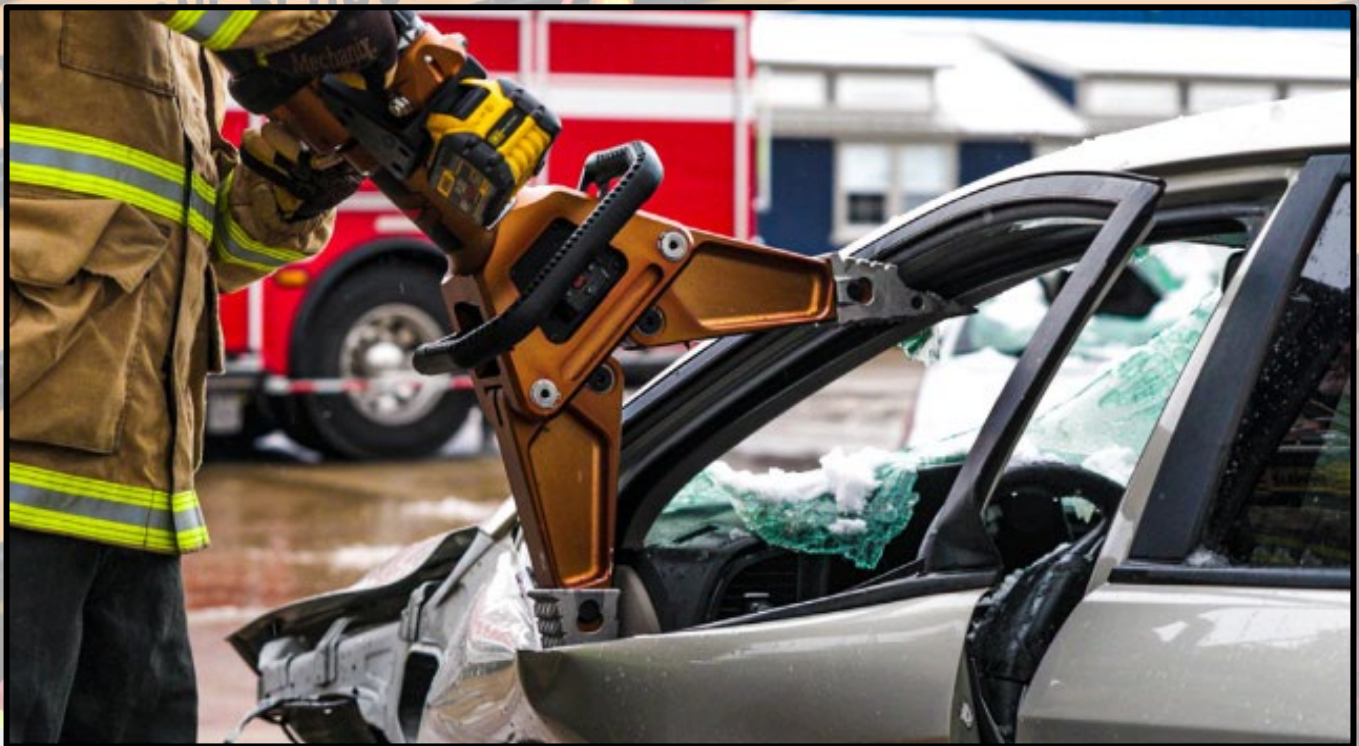




TRANS-CARE RESCUE LTD.

SERVING THE FIRE & RESCUE INDUSTRY SINCE 1981



1-800-71-RESCU

WWW.TRANS-CARERESCUE.COM



TRANS-CARE RESCUE LTD.

225 Service Road West
P.O. Box 559, Langham, SK S0K 2L0
Toll Free: 1-800-717-3728

ABOUT US

Trans-Care Rescue Ltd. offers a wide range of confined space, embankment, ice rescue, water rescue, vehicle extrication, trench rescue, fire, technical rope rescue and other safety related equipment, as well as personal protective gear.

In addition, we offer courses in each of these areas to ensure that you have a thorough knowledge of the equipment and how it operates.

TRAINING FACILITY

Located right off Highway 16 in Langham SK, our training facility can accommodate a variety of class sizes and technical training scenarios. Training can be booked at our facility or we can come to you. For more information contact: reception@trans-carerescue.com

STAFF THAT CARES

We are proud volunteers of local fire departments, sports teams and community events. We are passionate about what we do and pride ourselves on our industry, knowledge and friendly customer care.

FIND US ONLINE





We are a leading supplier of Rescue Equipment in Western Canada. Trans-Care Rescue Ltd. is one of the few suppliers in Canada who carry an extensive inventory of products and parts.



Grain Bin Rescue Training, 2024



Ice Rescue Training, 2024



Vehicle Extrication Training, 2024



Farm Equipment Accident Rescue Training, 2024

INDEX

Firefighting	3
AMKUS Rescue Systems	11
Vehicle Extrication	13
Traffic Safety	17
Ice & Water Rescue	19
Rescue Equipment	23
Lighting	28
Gas Monitoring	31
Speakers, Sirens, Controls & Radios	32
SCBA	34
Training	35





➤ WILDLAND FIRE GEAR

- Lazermax reflective piping helps wildland firefighters stay visible in the toughest conditions with reflective seams on the sleeves, shoulders, back and on the outside leg seams.
- 3M Scotchlite improves nighttime visibility and is found on the upper back, sleeves and pant leg.
- Reliable, high-quality fabric built to last. Featuring elasticized cuffs with rugged take-up straps.
- Ergonomic, athletic fit that maximizes functionality and performance.
- Vertical back pleats and triple knee pleats offer improved flexibility and movement.
- Wildland Fire Coat and Coverall feature a mic strap above radio pocket.



➤ DUAL CERTIFIED GEAR: WILDLAND & RESCUE

- LazerMax™ Reflective Piping for maximum night-time visibility.
- Triple Pleated Knees allow maximum movement and bending.
- Large 2" x 10" x 10" Expansion Pockets on pants carry plenty of tools and accessories.
- Stand-up Overlapping Collar provides neck protection when needed.
- Radio Pocket with Mic Strap fits a variety of radio manufacturers.
- All Lakeland Dual Certified Gear is UL Certified to NFPA 1951 and NFPA 1977



➤ NFA3200 Ultimate Glow PBI® Stretch Gauntlet Cuff Glove

- Ultimate Glow + Illuminated PBI Firefighter Gloves
- Application type: Structural & Proximity
- Certification: NFPA 1970:2025 – Structural Firefighting



➤ B2™ TURNOUT GEAR



- 32" length coat, standard in the fire industry
- Zipper/Velcro® closure
- Ergonomic pleated black and shoulders
- Easy Grip DRD for quick response in emergency situations
- Universal flashlight holder
- Self mic strap above radio pocket
- LazerMax trim for greater visibility
- Side take-up straps with low-profile high temp sliders for easy adjustment
- Reverse boot cut pants
- Features Black-ops multi-adjust suspenders

COLOR OPTIONS:



KHAKI GOLD BLACK



➤ B1™ TURNOUT GEAR

- 32" length coat
- Easy Grip™ DRD allows for quick response in emergency situations
- Radio pocket with self mic strap lined with moisture barrier
- Low profile 3" collar with hanger loop
- 3.25" Storm Flap provides thermal protection- Closure secures with fire retardant Velcro®
- Easy access Velcro® liner in hem of garment for simple liner inspection
- Low-rise pant waist design with small 3" rear bib for overlap protection
- Quick take-up straps for easy adjustment
- Features Black-ops multi-adjust suspenders- no metal suspender buttons

COLOR OPTIONS:



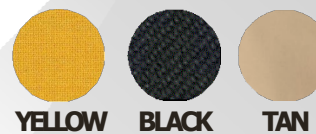
KHAKI GOLD BLACK



➤ B10™ TURNOUT GEAR

- Zipper/Velcro® closure
- Easy Grip DRD for quick response in emergency situations
- 7" black Kevlar® thumbhole wristers
- Radio pocket with Velcro® antenna opening on each side of flap
- Features Black-ops multi adjust suspenders
- Low-rise wait design with small 3" rear bib and overlap protection

COLOR OPTIONS:



YELLOW BLACK TAN



➤ IDENTIFY YOUR DEPARTMENT BY ADDING A HANGING NAME PLATE





➤ BULLARD LT SERIES STRUCTURAL FIRE HELMET

- High-heat thermoplastic outer shell
- Sure-Lock® ratchet headband and 12 comfort settings
- Nomex® chinstrap with quick-release buckle & removable fire-resistant cotton brow pad
- Rip-stop Nomex® ear/neck protector, leather ratchet cover
- Optional Quick-Attach face shield or goggle system
- **Certified to NFPA 1971-2018 standard**

COLOR OPTIONS:



➤ BULLARD PX CONTEMPORARY FIRE HELMET

- Custom comfort; U-Fit helmet headband system offers 36 adjustment settings
- Removable components allow for easy cleaning and decontamination
- Custom leather front and lighting options available
- **Exceeds NFPA 1971 Standard on Protective Ensemble for Structural Firefighting**

COLOR OPTIONS:



➤ BULLARD WILDLAND SERIES FIRE HELMET

- Easy to adjust Flex-Gear® ratchet sizing suspension
- Thermoplastic shell offers superior impact and penetration protection
- Three goggle clips and Velcro® attachments inside shell & absorbent cotton brow pad
- Adjustable chinstrap and offers comfortable 6-point suspension
- **Meets NFPA 1977 specifications**

COLOR OPTIONS:



➤ DRÄGER HPS® SAFEGUARD NFPA FIRE HELMET

- Lightweight with an innovative design that ensures optimal weight distribution
- Thermal insulation helps to protect you when fighting fires, while guaranteeing a balanced climate inside the helmet
- One size fits all; covers a wide range of individual head sizes from 50 to 67 cm
- Simple and tool-free removal of the four component parts makes for quick and effective cleaning
- **Approvals: NFPA 1971: 2018 & NFPA 1951: 2020 standards**



➤ DRÄGER HPS 3500 UNIVERSAL HELMET

- Helmet is ideally suited for forest and large-scale fire fighting, technical assistance, rescue from heights and water rescue
- Comfortable interior fitting with 4-point harness, includes padding of the entire head area
- Features a ventilation system ensuring an optimum climate inside the helmet. To prevent water, sparks and metal chips from entering, it can be closed if necessary
- **Approvals: NFPA 1971: 2018 & NFPA 1951: 2020**



HELLFIRE™ FELT INSULATED RUBBER BOOT

- Flame-/heat-resisting rubber
- Waterproof
- Removable Superknit covered, polyurethane foot bed
- Steel Triple-rib Ladder shank
- Stainless steel puncture-resisting bottom plate and Hellfire traction lug sole
- Abrasion-resisting rubber T-toe
- Vulcanized construction
- **Certified to meet NFPA 1971 structural, NFPA 1992 splash over hazmat & CSA Z195-14 Edition 7**



QR14™ STRUCTURAL LEATHER BOOT

- GORE® CROSSTECH® triple-layer moisture barrier protects against bloodborne pathogens
- Waterproof, flame- and cut-resisting leather upper with abrasion-resisting rubber toe
- Steel Triple-rib Ladder Shank
- Extra padding in the shin and ankle protects you from ladder rungs and other impacts
- Proprietary Traction Flex outsole
- Cement Construction
- **Certified to meet NFPA 1971 structural & CSA Z195-14 Edition 7**



KNOCKDOWN ELITE™ 14' LEATHER BOOT

- Waterproof, flame-resisting leather upper with abrasion-resisting rubber toe & heel protection
- Removable dual-density polyurethane insole
- Lenzi L-Protection® flexible, non-metallic, puncture-resisting insole
- Steel triple-rib ladder shank
- Exclusive Vibram® ATS sole with Fire & Ice technology
- Cement construction
- **Meets ASTM F2413-11, NFPA 1971 structural, NFPA 1992 splash over hazmat & CSA Z195 Edition 7**



PETE GLOVE

Multipurpose leather work glove that offers extreme dexterity with no sacrifice to protection.



FIRST DUE RESCUE GLOVE

Thermal liner is flame, cut, puncture and abrasion resistant. TPP rating of 8 adds additional flash protection. Features a strategic wear pad on well of thumb and index finger.



X2S GLOVE

Extreme thermal, cut, puncture and abrasion resistance. Proprietary formulation specifically designed for the fire service. Superior liquid and chemical resistance. Impervious to steam.



FIREFIGHTING



➤ INDIAN FEDCO 5 GALLON POLY TANK

- Corrosion and UV-resistant Poly tank will hold up to the harshest environments!
- Sturdy, black base has no drill holes (no possible leaks)
- The large handle at the top of the tank enables easy handling and provides storage for the brass pump when not in use.
- Includes a 4" filler opening and padded shoulder straps.
- Made in the USA



➤ ALPHA BACKPACK (4000-BP)



- Backpack has a capacity of 5 gallons (19 L)
- 1" wide carry handle on top of the backpack.
- 3" wide fully padded, adjustable shoulder and sternum straps.
- Manufactured from strong polyester fabric, protected by a thermoplastic polymer.
- 4" filling opening includes removable debris screen and lid with retaining strap.
- Weighs approximately 40lbs (18.2 kg) when full.
- 3/4" GHT hose connection located at bottom center of backpack.



1/4 TURN QUICK CONNECT



ROCKET NOZZLE WITH SHUT-OFF



FOG/STRAIGHT STREAM NOZZLE WITH PISTOL GRIP SHUT-OFFS

TH TOUGH HOOK



➤ ORIGINAL TOUGH HOOK HANGER

- Heavy-duty hanger that was specially designed to hang, hold, and carry over 200 lbs.
- Designed by a US Army Sergeant, this hanger was built for worry-free hanging and storage of heavy gear.
- I-beam construction and impact-resistant resin makes it nearly indestructible
- Integrated handle for easy carrying of equipment.
- Manufactured in the USA
- Backed with a 100% lifetime warranty



➤ COLD FIRE SUPPRESSANT/EXTINGUISHER

- Environmentally friendly fire extinguishing agent that puts out ANY fire faster, safer, with less water, less damage to property and less risk to first responders
- Cools 21 times faster than water and works to remove heat and fuel sources from the fire tetrahedron, preventing re-ignition
- Completely green and non-toxic



➤ ORIGINAL BADAXX - GLOSS BLACK

- Base of the Badaxx blade has been engineered to create an emergency anchor point that can latch onto or be driven into most building materials
- Safety rope can easily be attached to the hole at the end of the handle to allow you to rappel to safety
- Made from hardened 4150 tool steel
- Ergonomically shaped for a more natural swing



➤ SINGLE RADIO CHEST HARNESS

- Has a single radio holder and tool pouch
- It can carry all sizes of radio
- It's quick dry and has temperature resilience
- Made for all types of weather and has a ventilated design.



TEN4TEC
TRUE PROFESSIONAL GRADE

➤ DOUBLE RADIO CHEST HARNESS

- Designed for carrying 2 Radios, and iPad, Phone and tools
- It is made for all types of weather and has a ventilated design.
- Its quick dry and has temperature resilience



FIREFIGHTING



KURIYAMA



ARMTEX® HP™
STRUCTURAL FIREFIGHTING ATTACK HOSE



JAFLINE®
POLYESTER DOUBLE-JACKET FIRE HOSE



FOREST LITE™
TYPE 1 FIRE HOSE

Contact us for Hose ID, Length, Coupling Size & Color Options



➤ **FIRE HOSE FITTINGS**
Shown above: Adapters - Rocker Lug



➤ **UNIVERSAL SPANNER WRENCH**

- For 3/4" to 3" pin lug and rocker lug couplings
- Includes gas cock shutoff, pry bar and belt hook eye
- Overall length: 11-7/8"



➤ **HEAVY DUTY ADJUSTABLE HYDRANT WRENCH**

- For pentagon hydrant nuts up to 1-3/4" from point to flat
- Notched to fit 1-1/4" square hydrant nut
- Spanner for pin lug and rocker lug couplings (1.5" thru 6")
- Plated iron head, 7/8" plated steel handle
- Overall length: 18"



➤ **LOW LEVEL STRAINER**

- Lightweight aluminum alloy
- Drafts down to 2" from bottom
- Pivoting adjustable elbow
- Base pan design has additional side walls eliminating tank damage
- Meets NFPA Standard
- Female Threaded Standard



➤ **09K SMALL STRAIGHT GATE**

- Ideal for use in hose testing and on hydrants, stand pipes and pumps
- Non rising stem with crank handle
- Less than nine turns to open and close
- Metal to metal set
- Lightweight durable aluminum body construction, powder coated for corrosion resistance



➤ **SUCTION HOSE PVC LONG HANDLE**

- UV protection designed into the hose
- A smooth bore for unrestricted flow
- Flexibility from 65 C° to -40 C°
- Retains a quality wall thickness from 3" to 6" ID



➤ **12K GATE VALVES STRAIGHT**

- Extension: 8 1/2"
- Size: 15" H x 8" W
- Weight: 22 lbs.
- Aluminum body and anodized aluminum gate



FIREFIGHTING - DECONTAMINATION



➤ FIRE WASH

- Safely and effectively removes toxins, hydrocarbons and other contaminants from your personal protective ensembles.
- Developed to effectively clean any PPE/Turnout Gear, yet Fire Wash™ is gentle enough to also clean your station wear.
- Industry tested and safe to use on all outer shell fabrics, reflective trims, hardware, knee pads, suede, leather, moisture barriers, and thermal liners.
- Will not degrade the reflectivity of the reflective trim nor will it corrode your gear's metal hardware, i.e., metal snaps, clasps and zippers.
- Eco-Friendly – 100% Biodegradable.



➤ HAND & BODY SOAP

- Lab-designed for firefighters for post-fire decontamination and to eliminate smoky smell in just one wash, Sootsoap draws out even the toughest odors, toxins, pollutants & impurities- without drying you out
- Black in colour and deeply concentrated to coat your skin thoroughly for a deep clean



➤ RESPONDER WASH

- Designed to draw out harmful contaminants, toxins, and other impurities from the skin and hair
- Formulated with activated charcoal, it washes away lingering odor for a detoxifying clean
- Helps to eliminate that smoky smell from your hair and skin



RESPONDER WIPES

Formulated with Micellar Water, an innovative ingredient with cleansing compounds that dissolve dirt, oil, soot, and other hydrocarbons. Micelles gently lift away toxins & contaminants; draws out impurities from pores while hydrating your skin. 3-year shelf life



BULLARD WIPES

Extra large cloth, 10"x15". Biodegradable paraben-free, latex-free, and alcohol-free. Designed strong; won't tear to withstand the demands of firefighting. 5-year long lasting shelf life



AMKUS RESCUE SYSTEMS



➤ LRS Spreader

- The Light Rescue Spreader is the lightest and fastest spreader in its class, extending up to 37" with gatorized extended reached tips.
- Lightning fast open-close rate, it is crafted to shave seconds off extrication times.
- **Length 35.2in**
- **Weight 42.2 lbs**
- **Spreading Distance (with ERTs) 37 in**



➤ LRCT Combi Tool

- The Light Rescue Combi has the largest spreading distance and fastest cut times in its class.
- With the strength and reliability to spread and cut, the Light Rescue Combi is the essential first tool.
- **Length 35.3 in**
- **Weight 47.9lbs**
- **Max Spreading Distance 14in**

➤ LRC Cutter

- The Light Rescue Cutter features the largest motor and fastest cut times in its class.
- It features the largest motor in the industry, with a lightning fast open-close rate.
- The Light Rescue Cutter is crafted to shave seconds off cut times, ultimately saving lives better.
- **Length 33.6 in**
- **Weight 46 lbs**



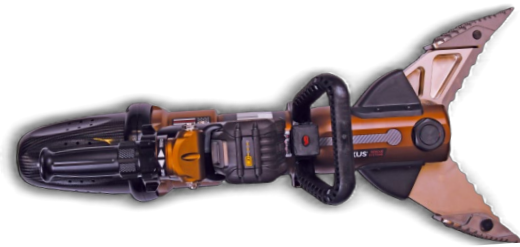
AMKUS RESCUE SYSTEMS

AMKUS
RESCUE SYSTEMS



➤ Heavy Rescue Spreader

- Includes removable AMKUS Gator Tips for a reliable grip that won't rip sheet metal
- Extended Reach Tips (ERT) increase the spread by an additional 8" without significant loss of power
- Gator Tips and ERT's utilize a push button release, so they're easy to install or remove with gloved hands
- High Intensity LED lights located in the handle
- 4-stage pumps provide amazing speed under both loaded and unloaded conditions
- Max Spreading Distance: 40" with ERT Tips



➤ Heavy Rescue Combi

- A compact, all-metal body combination rescue tool that combines the capabilities of a cutter and spreader
- Rotating handle allows tool to be easily repositioned
- All AMKUS tools are operable down to -30° C
- Powered by a DEWALT® Flexvolt 60V battery
- High Intensity LED lights located in the handle for increased visibility
- Cutter Opening: 13.8"
- Max Spreading Distance: 15.6"



➤ Heavy Rescue Cutter

- Cutter blades and center bolt design allow access to difficult cuts
- Rotating handle allows the tool to be easily repositioned
- Status LEDs offer user feedback on the tool status
- Center positioning of the battery and controls provides better protection, operator safety and maneuverability
- 4-stage pump provides amazing speed under both loaded and unloaded conditions
- Powered by a DEWALT® Flexvolt 60V battery that can be shared with other tools as needed.
- Cutter Opening: 7"
- Cutter Rating: A8/B9/C7/D9/E9/F4



➤ Heavy Rescue Telescoping Ram

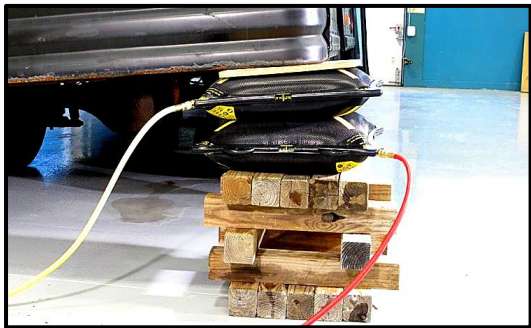
- All-metal body telescoping ram with the highest pushing force available in a battery powered unit
- Powered by a DEWALT® FLEXVOLT™ 60 Volt battery
- Maximum Extended Length: 50.5 inches
- Highest Spreading Force, Piston 1: 48,540 lbs.
- Lowest Spreading Force, Piston 2: 22,390 lbs.



➤ EXTENDED REACH TIPS (PAIR) AVAILABLE FOR SPREADER OR COMBI (SOLD SEPARATELY)

- Increases the spread up to 8"
- Unique construction eliminates loss of power
- Built-In push button release so tips are easy to install or remove-even with gloved hands
- Compatible with all AMKUS battery powered and hydraulic spreaders

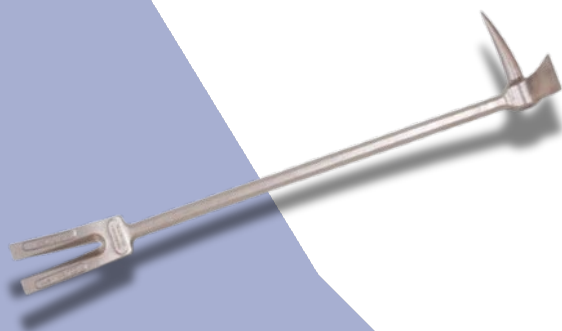
VEHICLE EXTRICATION



➤ MAXIFORCE AIR LIFTING BAGS

- Made from 3 layers of Neoprene covered Aramid fiber reinforcement and has the power to lift, move or shift weights up to 89 tons
- Each Air Lifting Bag has been subjected to a stringent factory pressure test to assure maximum operator safety.
- Small molded raised bumps provide an interlocking surface for stacking 2 lift bags
- Sizes and specifications shown in table below

ITEM	DIMENSIONS (IN.)	MAX LIFT	MAX LIFTING HEIGHT
KPI-1	6 x 6 x 3/4	1.5 US Ton	3.0"
KPI-3	6 x 12 x 3/4	3.5 US Ton	3.5"
KPI-5	10 x 10 x 3/4	5.4 US Ton	5.4"
KPI-8	12 x 12 x 7/8	8.2 US Ton	6.4"
KPI-10	12 x 18 x 7/8	12.9 US Ton	7.1"
KPI-12	15 x 15 x 7/8	13.7 US Ton	8.1"
KPI-17	15 x 21 x 7/8	19.0 US Ton	9.0"
KPI-22	20 x 20 x 7/8	25.6 US Ton	10.8"
KPI-28	20 x 26 x 7/8	34.0 US Ton	11.8"
KPI-32	24 x 24 x 7/8	38.0 US Ton	13.0"
KPI-35L	15 x 42 x 7/8	39.5 US Ton	9.5"
KPI-44	28 x 28 x 7/8	52.7 US Ton	15.3"



➤ HOOLIGAN TOOL

- Designed to pound, puncture, pry, twist and cut all types of barriers encountered by emergency service personnel
- Head and claw are forged from high alloy steel, heat treated to maximum strength then fitted to a 1" stress proof bar
- The bar has machine grooved non-slip grips
- Claw opening is parallel and fits over locks, hasps and many door bars
- Can also be used as a nail puller and gas shut off

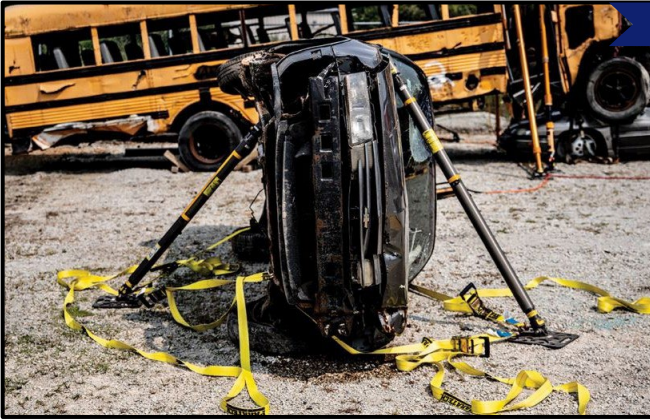


➤ THE BELUGA GLASS CUTTER

- Designed to quickly cut laminated safety glass used in automobile windshields, side windows, rear safety glass, and hurricane glass
- Can cut laminated high-rise glass up to 9mm thick
- The connected drill and cutting head can swivel so you can steer around obstructions
- Attaches to any 3/8" - 1/2" drill
- Cut an entire windshield out in less than a minute!

VEHICLE EXTRICATION

VEHICLE STABILIZATION KITS BY **PARATECH**[®]



STANDARD VSK

- Maximum load up to 40,000 lbs./ 18,144 kg with a 4:1 safety factor
- Designed to stabilize everything from small vehicles to large commercial/municipal vehicles

KIT INCLUDES:

- (x2) AcmeThread Strut (25 - 36 in.)
- (x2) Strut Extension (12 in.)
- (x2) Strut Extension (24 in.)
- (x2) Multi-Base
- (x2) Hinged Base w/ Anchor Ring (12 in.)
- (x4) Ratchet Belt w/ Finger Hook (27 ft.)
- (x2) Tie Down Keys w/J Hook



HIGHWAY VSK

- Maximum load up to 80,000 lbs./ 36,287 kg with a 4:1 safety factor
- Designed for multiple vehicles, longer reach and heavier weights such as a fully loaded tractor-trailer

KIT INCLUDES:

- (x2) AcmeThread Strut (25 - 36 in.)
- (x2) AcmeThread Strut (37 - 58 in.)
- (x2) Strut Extension (12 in.)
- (x2) Strut Extension (24 in.)
- (x2) Strut Extension (36 in.)
- (x4) Multi-Base
- (x4) Hinged Base Plate w/ Anchor Ring (12 in.)
- (x4) Ratchet Belt w/ Finger Hook (27 ft.)
- (x4) Tie Down Keys w/J Hook



INTERSTATE VSK

- Maximum load up to 120,000 lbs./ 54,534 kg
- Designed to stabilize multiple industrial or commercial vehicles in complex collision scenarios

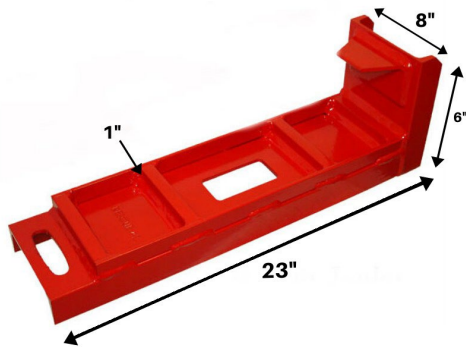
KIT INCLUDES:

- (x2) LongShore Strut 304 (36 - 50 in.)
- (x2) LongShore Strut 406 (48 - 73 in.)
- (x2) LongShore Strut 610 (72 - 116 in.)
- (x3) LongShore 235 Extension (24 in.)
- (x3) LongShore 435 Extension (48 in.)
- (x4) V Base
- (x4) Contour Base
- (x4) Multi-Base
- (x6) Hinged Base Plate w/ Anchor Ring (12 in.)
- (x2) Chain 20' x 3/8" -grade 100
- (x6) Ratchet Belt w/ Finger Hook (27 ft.)
- (x4) Tie Down Keys w/J Hook
- (x2) Non Slip Neoprene Pad

****PARATECH PRODUCTS THROUGH TRANS-CARE RESCUE ARE ONLY AVAILABLE IN SASKATCHEWAN & MANITOBA****

VEHICLE EXTRICATION

RESCUE 42



➤ O-PLATE™ JUNIOR

- Multipurpose extrication tool used for vehicle stabilization and hydraulic tool support
- Protects against rocker panel collapse
- Acts as a wheel pull/edge protector
- Provides wheel traction for winching
- Can be used as a lift jack extender or base
- 3:1 safety factor
- Rated pulling strength: 8,000 lbs.
- Lifetime warranty



➤ THE LARGE SHARK™

- Vehicle stabilization tool for rescue crews that regularly use step cribbing
- 16.5" tall; it can stabilize most high clearance vehicles
- Can be used upside down as a wedge anchor
- Functions as a wheel chock
- Positive grip teeth bite into boards, rocker panels and road surfaces
- Collapsible & stackable for compact storage and easy handling



➤ TELECRIB® STRUTS

- No couplings, twist locks – just slide out and pin it
- 18,000 lb max working load
- 2:1 safety factor
- Removable Base Plate articulates 180°, accepts ratchet strap hooks or picket
- Safety interlock system prevents over-extension of strut tubes
- Universal Combi-head with piercing point, 3/8" chain slot, and 2x4 / 2x6 center support with nail holes
- Large, yellow, glove friendly pins



➤ TELECRIB® STRUT JACK

- A removable 8,000 lbs jack which fits over the strut body and gives the rescuer a controlled means for lifting or lowering a load.
- 15" range to raise or lower the entire extension of both strut sizes by pinning the strut and resetting the jack
- Because it is removable, it can be moved from strut to strut as needed
- Features a base hole to convert Strut into a Ram
- Compact for easy storage



VEHICLE EXTRICATION



GLAS-MASTER

- Glass removal tool helps to expedite the removal of all vehicular glass & reduce the risk of trauma to patients
 - Manually operated, self supported, no electricity or hydraulics required.
 - This versatile tool can be used on fibreglass, wood and plaster, as well as used for underwater rescue.
- Features a spring loaded center punch and a new blade design that reduces windshield fragmentation by 33% over the conventional blade.



QUICK-CUT RESCUE TOOL

- Can easily cut through seatbelts, harnesses, stretcher straps, etc.
- V-shaped blades can cut through 10,000-strength webbing in just one stroke.
- Made out of high-strength aluminum alloy with stainless steel blades
- Specs: 9.5" long; weighs roughly 1 lb.
- Dzus tool in tip can easily open aircraft panels

NEW



SOFT PATIENT PROTECTION

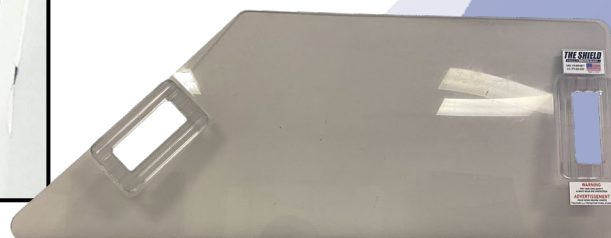
- Constructed of 20 mil clear fire-retardant PVC vinyl which allows for total transparency to facilitate patient monitoring.
- Soft protection is UL-214 classified flame retardant and meets NFPA-701 standards for flame propagation.
- It is completely waterproof and has a high abrasion resistance.
- Resists mildew, oils and many chemicals, and can be cleaned with warm water and a mild cleaning solution.
- 4' x 5' Soft Protection (Single Patient)
- 5' x 7' Soft Protection (Multiple Patients)

NEW



HARD PATIENT PROTECTION

- One piece mold injected, ballistic grade polyurethane.
- Resists abrasion and is transparent for patient monitoring.
- Hard protection meets the UL-972 standard for impact resistance
- Can be easily cleaned with warm water and a mild detergent.
- Dimensions: 15" wide x 39" long





➤ 16' TRAFFIC BATON WITH BRIGHT LED LIGHTS

- Water & shock resistant and come with a handle strap and metal belt clip
- Operates on two C-batteries (not included)
- 2 Light modes: On, Flashing
- Visible over 200 yards away
- Lifespan of up to 100,000 hours



➤ MAGNETIC LED DIRECTION SIGN LED ARROW BOARD

- Lighted Sign has visibility over 800 meters
- Lights will run for 2-3 days on continuous use
- Each reflective direction arrow includes 9 bright Amber LED light bulbs
- Easy On/Off power button located on front of the sign
- Includes black nylon bag; simply roll up and store
- Powered by 3 AA batteries
- Dimensions: 33" W x 17.5" H x 0.25" D
- Weight: 2.8 lbs



Side #1



Side #2

➤ 18' STOP & SLOW PADDLE WITH BRIGHT LED LIGHTS

- High power white LEDs in lettering
- Rechargeable lithium ion battery
- 2 Light modes: On, Flashing
- Visible up to 1 mile away
- Lightweight and durable design
- Total weight: 2.1 lbs



STARS LANDING KIT

▶ ULTRABRIGHT CLASS 2 PUBLIC SAFETY VESTS

- 6 Point breakaway
- Performance cut offers max comfort and allows access to bunker gear pockets or portable radio at waistline
- Chevron reflective pattern on front and back offers high visibility
- Meets ANSI/SEA 107-2020
- Standard imprints include: FIRE, EMS, POLICE & SHERIFF
- Custom imprints available

VEST COLOR OPTIONS:



pi·lit



▶ PI-LIT SEQUENTIAL ROAD FLARES PROFESSIONAL RECHARGEABLE

- Automatic synchronization of flares; no programming required
- 20+ hour runtime (flash pattern dependent)
- 4 flash patterns: 2 sequential, 1 simultaneous, 1 steady-burn
- Reverse the direction of the sequence with a push of the button
- "Pair mode" allows for multiple sets to be synchronized
- Dual purpose carrying case charges all flares at once
- 6 hour recharge time from completely depleted battery
- Kit sizes: 10 set, 6 set, 4 set
- Kit includes: Flares, carrying/charging case, vehicle plug, wall plug
- Also available in a Commuter Style set, powered by alkaline battery

PI-LIT COLOR OPTIONS:



▶ EMERGENCY RESPONDER COMPACT® SIGNS

- Permanently mounted to a foldable crossbrace
- Crossbracing is equipped with a single trigger release mechanism for easy deployment and take down
- Made from Reflexite® Super Bight material, signs are highly visible in daylight and headlights
- Available in 36" or 48" size
- Custom signage available



▶ TRAFFIC CONE WITH HI-COLLAR

- Available in 18" or 28" height



ICE & WATER RESCUE

▶ OCEANID RAPID DEPLOYMENT CRAFT (RDC)

- Standard package includes carrying bag, floor top carpet, repair kit, two paddles, paddle bag, tow strap assembly, & air fill manifold
- Uprturned ends allow rescuers to glide boat's open end over victim's victim's head while remaining above water at all times
- Floor is open at each end, allowing two entry points
- The RDC will store in a 2' cube, inflate in a heartbeat, and can easily be carried by one person
- Designed to withstand severe use conditions for many years and includes a 12 year warranty



▶ EVAC EP220 GEAR PAK

- Made of 1000 Denier Cordura nylon and extra heavy webbing for strength and durability.
- Protects your gear, and comes with a mesh window to aid in air circulation and drying.
- Includes an internal pocket for gloves and other equipment.
- One of the largest Gear Paks you can buy!
- Dimensions: 18" L x 18" W x 20" H

COLOR OPTIONS:   
BLUE YELLOW RED

▶ MUSTANG SURVIVAL RESCUE STICK

- Incredibly easy to use, the Rescue Stick™ provides rapid flotation assistance to a person at risk of drowning, simply remove the baton-shaped Rescue Stick from its waterproof bag and throw it near the person - once it contacts water it inflates in seconds to a large horseshoe shape keeping the victim afloat.
- Measuring only 14" in length and weighing 15.5 oz, it is the most versatile rescue flotation device available.
- Invaluable tool for police officers, fire departments, lifeguards and recreational boaters.



75' WATER RESCUE PROFESSIONAL THROW BAG

This self draining throw bag is designed for water rescue professionals to allow for maximum throwing efficiency and ease of re-loading even with a gloved hand. The 75' rope is 3/8" in diameter, floats, and has a minimum 2000 lb breaking strength with a nylon core and polypropylene, yellow and orange weave sheath. Measures a true 75' from knot end to knot end, making distance measuring much easier.



WATER RESCUE ROPE

A highly buoyant rope provides rescue personnel with a range of options to meet their specific needs. Ideal for swift water, flood, and ice rescue applications.

- Sold by the meter
- Diameter: 7/16"





➤ SENTINEL™ SERIES

- Constant wear water rescue dry suit that is waterproof, breathable, and ideal for flood, swift water, and ice rescue
- Mobility Based Sizing offers a semi-custom fit without the custom price tag
- Rapid Repair Technology™ enables users to self-replace neck and wrist seals and repair small leaks in an hour or less
- Nylon reinforced elbows, knees, seat, and overcuffs
- Molded foam knee and elbow pads help prevent injury
- Integrated GORE-TEX® dry socks
- Two arm pockets and two thigh cargo pockets



➤ UNIVERSAL SWIFT WATER RESCUE VEST

- 25 lb (111 N) Buoyancy - Layered flotation foam increases comfort to improve operational performance both in and out of the water
- Durable harness with 2" webbing tested to 730 lb requirements after accelerated weathering
- Quick donning with 7 adjustment tabs to create a customized fit for users with chest sizes from 30-58" and features MOLLE webbing on both shoulders, pockets and back
- NFPA 1952 compliant



➤ INDUSTRIAL MESH PFD VEST

- Offers maximum visibility, mobility, cooling and comfort
- Mesh shoulders offers mobility and comfort
- Large front pockets with Velcro closure
- Side adjustment for dual sizing
- SOLAS reflective tape across the front and back of the vest



➤ PICK-OF-LIFE ICE AWLS

- Pick-of-Life awls are for self-rescue, allowing you to crawl on top of the ice using the picks as traction
- Picks float on top of water and are bright orange in color for high visibility
- 4" L plastic handles each have a retractable sheath covering the 1" L picks making storage simple
- 5 1/4' cord that attaches the 2 handles has reflective ticking for low-light conditions



ICE COMMANDER™ RESCUE SUIT

Flotation and insulation performance of a zip-in buoyancy liner allows users to immerse for long periods of time in icy cold water and maintain mental and physical capabilities. Modular suit is completely waterproof with a watertight hood, integrated gloves, attached boots and flexible full-length zipper. Integrated chest harness allows attachment to tether lines, ice awl pockets for storage, rubber gloves, reinforced knees and non-slip rubber soles on the attached boots. Liner can be unzipped and removed for cleaning and in-the-field repairs



Trans-Care Rescue - Ice Rescue Training

ICE & WATER RESCUE



NEW

FWBH WATER HELMENT

- For light-weight and comfortable protection.
- The Ratchet system and chin cup provide a secure fit and the helmet can be fitted with flashlight or motion camera adapters.
- Hi-impact ABS shell
- Accessory side rails and NVG/Go Pro mounting bracket
- 9 ventilation vents
- Closed-cell EVA molded foam liner for comfort and safety
- Ratchet easy-fit system
- Chin cup webbed strap adjusts to fit
- Removable foam ear protection pads
- Colors: Hi-Vis Yellow, Black, OD Green, Red, White
- Sizes: S/M, L/XL

OPTIONAL HELMET ACCESSORIES



QUAD TACTICAL LIGHT



FLASHLIGHT HOLDER 25MM WITH WL ADAPTER



FLASHLIGHT HOLDER W/ ADAPTER



CAMERA SHROUD ADAPTER

NEW

OCEANID RAPID DEPLOYMENT CRAFT (RDC)

- The AV-5001 vest has two storage pockets and breathable mesh backing. Its zipper and straps combine a superb fit with maximum flexibility.
- SOLAS Tape provide exceptional reflectivity for increased visibility
- Shoulder Mesh for ventilation
- Two flap pockets have hook & loop closures keeping belonging secure
- Zipper closure and double straps for secure fit
- Superb Fit & Flexibility
- Super soft PVC flotation foam
- Neoprene collar for comfortable fit
- Sizes: S/M, L/XL, 2XL/3XL



CALL US AT 1-800-717-3728 OR

EMAIL OUR SALES TEAM AT SALES@TRANS-CARERESCUE.COM



NEW

RS-1002 ICE RESCUE SUIT



- Made for cold water and ice rescue operations.
- This universal fitting suit is made of a rugged hi-tenacity nylon shell with a soft and easy to don liner.
- Universal Fit (Built to fit 5'0" to 6'4)
- Boots fit up to size US size 12
- Hi-Vis Yellow
- Rugged Elbow and Knee Patches
- Dual ice pick pockets
- Removable harness system
- Protective center zipper flap
- Internal suspenders
- Registered serial number
- 3" x 11" Velcro patch
- Stow bag with mesh accessory pocket
- Stainless steel studs on boots
- Optional over boot allows the wearer to cover the steel studs (sold separately)



BC 9005/9003 OVER BOOTS

- Allows the wearer to cover the steel studs

NEW



RS-1002 ICE RESCUE SUIT

- Made for cold water and ice rescue operations.
- This universal fitting suit is made of a rugged hi-tenacity nylon shell with a soft and easy to don liner.
- Universal Fit (Built to fit 5'0" to 6'4)
- Boots fit up to size US size 12
- Hi-Vis Yellow
- Rugged Elbow and Knee Patches
- Dual ice pick pockets
- Removable harness system
- Protective center zipper flap
- Internal suspenders
- Registered serial number
- 3" x 11" Velcro patch
- Stow bag with mesh accessory pocket
- Stainless steel studs on boots
- Optional over boot allows the wearer to cover the steel studs (sold separately)

RESCUE EQUIPMENT

➤ AVAO® INTERNATIONAL VERSION



- Certifications: CE NE 361, CE EN 813, CE EN 358, ANSI Z359.11, ANSI Z459.1, CSA Z259.10, NFPA2500 class 3, GB 6095
- The AVAO harness is specifically designed for workers at height.
- Widely spaced shoulder straps reduce neck chafing.
- Semi-rigid waistbelt and leg loops provide optimal harness fit and support.
- Self-locking DOUBLEBACK buckles make adjusting the shoulder straps, waistbelt, and leg loops simple and convenient.
- Shoulder straps are equipped with a parking system for fall-arrest lanyard connectors, so that its out of the user's way and the connectors within reach.



➤ VERTEX® CANADA VERSION

- Very comfortable, thanks to its six-point textile suspension, which adapts perfectly to the shape of the head
- CENTERFIT feature allows perfect centering of the helmet on the head, thanks to its two side adjustment wheels
- Adjustable-strength chinstrap makes it ideal for both work at height and on the ground.
- Shock absorption achieved through deformation of the outer shell
- Unventilated outer shell protects against electrical hazards, molten metal splash and flames
- Fits head circumference of 53 - 63 cm



MAESTROS & L
Descender for Technical Rescue



SPIN L2
Very High-Efficiency
Double Pulley with Swivel



ASAP LOCK
Mobile Fall Arrester
with Locking Function



WILLIAM
Lightweight Asymmetrical
Large-Capacity Carabiner



TWINRELEASE
Releasable Double Progress
Capture Pulley for Haul System



➤ 1/2" HTP STATIC ROPE



- Super-durable, low-stretch rope features a unique sheath construction that inhibits picking and stays firm for effective handling despite the load
- Its strength and durability make it a great choice for specialized rigging, speed lines and hauling applications.
- Certifications: ANSI Z359, NFPA 1983



JUNKIN



➤ BREAK-AWAY PLASTIC STRETCHER

- Designed to rescue injured persons from locations where lengthy foot travel is mandatory
- The stretcher breaks into two halves which can be back-packed to the point of rescue and assembled in seconds
- Positive-locking quick-release pins secure two halves together.
- Includes four standard straps
- Dimensions: 84.5" L x 24" W x 7.5" H
- Weight: 32 lbs
- Load Capacity: 1200 lbs

FERNO



➤ MULE II LITTER WHEEL WITH ADJUSTABLE HANDLES

- Single wheel design makes it ideal for narrow trails, allowing agility, versatility and ease of movement even in the roughest terrain
- The large, lightweight all-terrain wheel offers tracking ability and shock absorption for smooth and comfortable patient transport
- Fast ratchet securing system locks basket stretcher with two straps and two rubberized steel hooks
- Quick-release pins, each with a wire lanyard, lock into position with ease on each side of the handle
- Its unique uni-support design allows the wheel to be quickly and easily removed for compact storage and transport
- Features 8 handle adjustments

SKEDCO



➤ SKED® BASIC RESCUE SYSTEM

- Rescue stretcher for confined space, high angle or technical rescue, and traditional land based applications
- Comes equipped for horizontal hoisting by helicopter or vertical hoisting in caves or industrial confined spaces
- When the patient is packaged, the stretcher becomes rigid
- Durable plastic provides protection for the patient while allowing extrication through the most demanding confined spaces
- Available in "International Orange" and "O.D. Green" for military, S.W.A.T. and other tactical situations



RESCUE EQUIPMENT

Seek
thermal



➤ ATTACK PRO+ THERMAL IMAGING CAMERA

- NFPA 1801: 2021 Certified
- 320 x 240 High- resolution sensor; enhanced clarity and colorization displayed at 25Hz
- High impact and heat resistant; can operate up to 260° C (500° F)
- Includes the camera, two removable batteries and a charging dock
- Features a 300 lumen LED flashlight
- Long lasting rechargeable battery that offers greater than 6 hours of continuous thermal imaging
- Detection distance range of 12" to 1000 ft.
- Find the seat of the fire and make decisions faster when every second counts. See through smoke, visualize your plan, and execute



➤ FIREPRO 200 PERSONAL THERMAL CAMERA

- Thermal cameras provide firefighters with the ability to regain orientation in low visibility or blackout conditions
- Mixed Gain technology allows firefighters to see detail in the hottest and coolest regions of the scene at the same time without freezing and switching modes
- Resolution: 200 x 150
- Field of view: 27° x 35°
- Detection: -20°C to 550°C
- Imaging: Mixed gain mode with SV1
- Flashlight: 300 Lumen LED
- Detection: -20°C to 550°C

KEEP IT
CLOSE WITH A
GEAR KEEPER



➤ FIREPRO 300

- Affordable and lightweight thermal camera to enhance situational awareness and increase firefighter safety
- Featuring a high-resolution 320 x 240 sensor, FirePRO 300 provides firefighters with the ability to regain orientation in low visibility or blackout smoke conditions.
- Mixed Gain technology allows firefighters to see detail in the hottest and coolest regions of the scene at the same time without freezing and switching modes
- 90° viewing angle makes pointing the camera as easy as a smartphone
- Six hour battery life. Long lasting rechargeable battery ensures FirePRO 300 is always ready (charging dock included)
- Comes with a free 2 year standard warranty

➤ **ONLY AVAILABLE FOR SALE IN SASKATCHEWAN**



RESCUE EQUIPMENT



GRAIN RESCUE EXTRICATION KIT



➤ GREAT WALL OF RESCUE

- When the panels are inserted into the grain mass, the grain is removed from around the victim to relieve pressure and to facilitate a safe & expedient rescue
- Made of lightweight aluminum, rescuers can easily lift a panel up and join with another; sleek finish allows the panels to slide easily into grain.
- Individual panels can be aligned to form a variety of configurations dependent on the rescue situation: round tube, curved wall, straight all and barrier wall
- Includes a carrying case, step, 3 ft. long pipe and 12" x 24" rescue platforms which help to distribute a rescuers weight, making it easier to walk in grain, lessen the chance of grain movement and reduce pressure of body weight felt by victim

➤ GRAIN RESCUE AUGER

- Augers out grain quicker than scooping when freeing the trapped victim
- Once placed inside the Great Wall of Rescue, the auger will quickly expel the unwanted grain
- Weighing only 26 lbs. the Rescue Auger can expel grain at 1.5 bushels/minute
- Easy to use with a variety of grain - corn, wheat, milo, soybeans and more
- Easily operated by any power drill

➤ KIT INCLUDES 6 PANELS, 1 STEP, 1 PIPE, 4 RESCUER PLATFORMS & 1 BAG



➤ THALES SAFETY CHEST COLLAR & EVACUATION TRIANGLE

- The Thales safety chest collar and evacuation triangle is designed for rescue operations, such as grain bin rescue and cable lift evacuations.
- The chest collar configuration allows the evacuee to be secured in an emergency and then evacuated with the triangle.
- Passing from the chest collar configuration to the triangle configuration is quick with the use of three hook and loop straps.
- The ergonomic shape of the seat and the presence of shoulder straps makes suspension more comfortable than with a classic evacuation triangle.
- Color-coding differentiates the back and seat, as well as the different straps and closure system, making it easier to put on the evacuee.



RESCUE EQUIPMENT

CHAN NEL LOCK



➤ 86 9-INCH XLT RESCUE TOOL

- XLT™ Xtreme Leverage Technology means considerably less force required to cut than traditional high leverage designs
- Spring and lock feature allows easy one-hand operation
- Fits securely in bunker pockets
- Laser heat-treated cutting edges cut hardened steel, wires and cables easily
- Spanner wrench tightens and loosens up to 5" hose couplings
- Pries open windows and doors
- Shuts off gas safety valves
- Aggressive crosshatch pattern on jaws grips work tightly and the pipe grip design accommodates many shapes

CHAN NEL LOCK



➤ 87 9-INCH RESCUE TOOL

- 30% lighter than the 89 Rescue Tool for compact storage
- Fits securely in bunker pockets
- Narrow jaw profile fits in tight spots
- Standard battery cables are no match for its cutting power
- Hardened cutting edges shear through soft metal
- Spanner wrench tightens and loosens up to 5" hose couplings
- Pries open windows and doors
- Shuts off gas safety valves

➤ CMC 1 INCH (25 MM) TUBULAR WEB (SOLD BY THE FOOT)

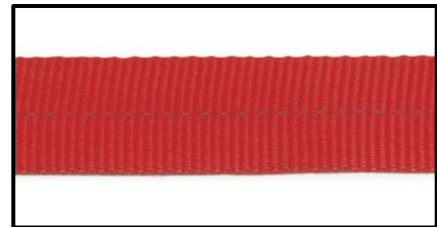
- Convenient anchor points for all rescue systems
- Strong and tough 1" tubular mil-spec needle loom nylon web
- Webbing sold by the foot or max spool length is 300 feet (up to 3 sections per spool)
- MBS: 4,000 LBF (17.8 kN)
- Weight per foot: 0.5 oz. (14 g)



200101 (ORANGE)



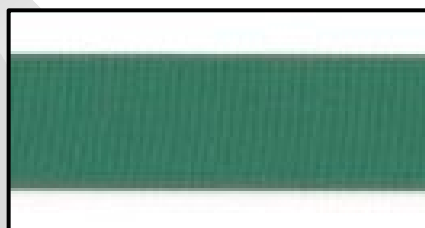
200102 (BLUE)



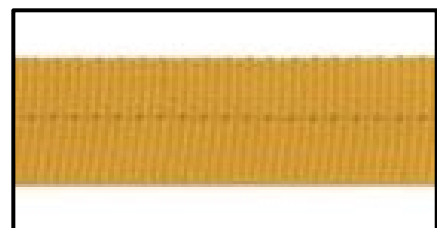
200103 (RED)



200105 (BLACK)



200106 (GREEN)



200107 (YELLOW)





➤ 3 LAYER TRAUMA BLANKET

- Large survival blanket with self adhesive closure
- Provides the total warmth and weather protection, reducing shock and guarding against the risk of hypothermia in all conditions.
- Can easily be re-opened for examination of the casualty or medical intervention.
- Re-usability: blankets can be re-used many times without loss of performance.



➤ BLIZZARD TRANSPORT CLS

- Disposable litter with 2-layer blanket
- High performance insulating blanket is attached to a carry litter for rapid evacuation
- Features 8 handles for an easy lift
- Can be used with oxygenated head pads to aid warming process for casualties with hypothermia (sold separately)

LIGHTING

➤ MTB – 10000 SITE LIGHT



- MTB – 10000 is a super powerful 10000 lumen lite light
- Supports batteries from Milwaukee, De Walt, Makita, and Metabo accepting up to 20V 6.0Ah batteries, with 4 adaptors included in the box
- It has a 360-degree light output and can be dimmed multiple times to preserve battery life.
- Has multiple colour temperatures

➤ MTB – 5300 MULTI TOOL BATTERY LIGHT

- MTB-5300 is a powerful 5300 Lumen LED site light
- Supports batteries from Milwaukee, De Walt, Makita, and Metabo, accepting up to 20V 6.0Ah batteries, with 4 adaptors are included.
- Constructed from super tough nylon and with IK07 and IP65 rating and built to withstand tough environments.
- Shore pper





▶ DUAL LED SENSOR HEADLIGHT (HL-8R)

- 475 lumen white LEDs
- Beam distance: 90 meters
- 60° rotational head
- Run time: 4 - 35 hours
- Used as a long distance spot beam and wide angle flood thanks to side SMD LED's
- IK07 shock resistant, IP65 dust & water resistant
- Includes an adjustable non-slip silicone lined headband & Type C charging cable



▶ RIGHT ANGLED LED ATEX TORCH

- 350 lumen white CREE LED, 65000k
- Beam distance: 228 meters
- Run time: 6.5 - 13 hours
- Intrinsically safe for use in hazardous locations
- Stainless steel belt/pocket clip
- IP65 dust & water resistant
- Ultra strength polycarbonate housing; chemical and corrosion resistant



▶ L-1800 RECHARGEABLE LED LANTERN

- Industrial LED lantern with long-range spot beam
- Base features a 1000 lumen COB work light; providing a flood of light
- Lumens: 1800
- Beam distance: 760 meters
- Run time: 9 - 390 hours
- Red static & flashing mode for signaling & night vision
- Built-in is a USB power bank for charging devices



▶ COMPACT WORK LIGHT (SLR-1450)

- 1450 lumen white COB LED with 6500k color temperature
- Run time: 90 hours
- Easily charged via USB-C in just 3 hours
- Includes a 150 lumen white LED flashlight, as well as 45 lumen Red and Red flash modes for added functionality.
- Features a 180° rotating handle/stand with carabiner snap hook, strong magnets within the stand, and a glow-in-the-dark strip for extra visibility.



▶ COMPACT MINI WORK LIGHT (K-550)

- 550 lumen
- Beam distance: 29 meters
- Powerful inspection light in a tiny form; at just 6cm in diameter
- 3 hour battery life in high mode
- Features a built in carabiner for hanging, powerful magnet and 160 degree rotating stand, giving it incredible versatility
- Press and hold turbo mode that increases the output to 550 Lumens when needed





▶ **COMMAND+ LOPRO WHITE & GREEN LED HELMET LIGHT**

- 3 modes: Low (32 lumens), Medium (78 lumens) & High (100 lumens)
- Low profile design enables most external 4" and 6" face shields to be raised and lowered without interference
- The combination of white and green LEDs offers improved depth perception, color rendition and smoke cutting ability
- Meets the requirements of NFPA 1971 when used with the silicone strap
- Rear red flashing LED in the battery pack can be seen from over 1 mile away
- Rechargeable or battery powered options available



▶ **C-CLAMP SIDE MOUNTED HELMET LIGHT**

- Features a 275 lumens focused beam; for use in structural firefighting & rescue
- Impact resistant and meets NFPA fire resistant requirements
- Works in all-weather conditions and can be submerged underwater
- Features a strike bezel that is strong enough to shatter a car windshield
- Rear safety LED; on/off switch flashes green when the light is activated and can be seen from over 1200 feet away



▶ **BREAKTHROUGH® BTS RIGHT ANGLE LIGHT**

- Low profile BTS provides a 500 lumen beam for cutting through smoke and illuminating the immediate surrounding area
- Meets NFPA 1971-8.6 (2013) fire resistant requirements
- Stainless steel clip in the back allows for hands-free use
- Waterproof up to 3 meters and impact resistant up to 7 meters
- 3 modes: High, Low, Flashing
- Outputs 100 - 500 lumens
- Operating temperature of -20° C to 149° C
- Runs on (4) AA batteries with a battery life of 3 - 12 hours



▶ **DISCOVER WHITE LED HELMET LIGHT**

- Provides hands-free illumination in all-weather conditions and delivers up to 300 lumens of panoramic lighting
- Meets NFPA 1971-8.6 (2013) fire resistant requirements
- Designed for use on safety helmets (including hard hats and fire fighter helmets)
- Waterproof and impact resistant up to 3 meters
- Beam distance: 376 feet (115m)
- Outputs 100 - 500 lumens
- Operating temperature of -20° C to 149° C
- Runs on (4) AA batteries with a battery life of 5 - 12 hours



▶ QUANTUM SERIES

- Meet the Quantum Series: Patented technology allows you to buy one product, at single-color cost, and unlock multi-color mode when required.
- With single, dual, tri, and quad modes remotely programmable via an app, you will have endless flexibility under one part number.
- Available in 4 configuration types: Single, Dual, Tri, and Quad across a family of 6 light bars, 5 light sticks, and 20+ vehicle specific inner bars.
- All-in-one: Skip the long production wait times
- Field Programmable: 60 Days to lock in your color option



T3 SURFACE MOUNT	FUSION-S SURFACE MOUNT	FUSION DOUBLE FSM	BEACON AM600
T3 is fiercely bright, affordable and can be mounted almost anywhere on your vehicle. 14 flash patterns, including brake, tail and steady on. Five bracket options: Rotating, License Plate, Single L-Bracket, Double L-Bracket, Hood Bracket.	User configurable in red, blue, amber, white, and green, the Fusion-S offers the user a new and improved 40-degree optical light spread for long-range visibility. Flood mode, cruise mode, stop, turn and tail pattern compatible.	Five color options: red, blue, amber, green, or white. Features 40° light spread for long-range visibility. Syncs with T3, Cannon, Mirror Puck, Quad Surface Mount. Three user-programmable modes with flood, cruise, and stop/tail/turn pattern capabilities	Single-color SAE Class 1 Certified LED beacon with multiple mounting options and 20 flash patterns including single, double, triple, quint, rotating, reverse rotating, combos. Sync up to six units. Available colors are amber, red, blue, white and green.

GAS MONITORING

▶ GX-3R PRO GAS MONITOR

- Worlds smallest 5 gas monitor weighing only 4.58 ounces
- Can comfortably be clipped within a worker's breathing zone
- Dimensions: 2.9" W x 2.6" H x 1.06" D
- In addition to monitoring standard confined space gases, LEL, O2, CO, & H2S, the GX-3R Pro has a 5th channel where you can add infrared or toxic gas sensors
- Comes equipped with Bluetooth wireless communication, man-down alarm, and the choice of alkaline or rechargeable power supply
- Features water and dust resistant design (IP66/68) & includes a 3 year warranty



**WE OFFER A LARGE SELECTION OF FIXED AND PORTABLE GAS DETECTION SOLUTIONS
SINGLE GAS, 4 GAS, 5 GAS, CALIBRATION STATIONS, DOCKS & MORE**

SPEAKERS, SIRENS & CONTROLS



▶ TRITON 100W SPEAKER

Engineered for 85° sound dispersion and housed in a compact, low-profile, durable polycarbonate housing, the Feniex Triton is the ideal speaker for any police, fire or EMS vehicle.

- Compact design fits behind vehicle's grille or push bumper
- Universal siren compatibility
- Meets or exceeds SAE J1849 standards
- Dimensions: 7" x 7" x 3"
- Frequency Response: 600–2700 Hz

▶ HAMMER 100W SPEAKER + SIREN

All-in-one universal low-frequency siren. With siren, amplifier and speaker combined within a single, easy-to-install unit, the Hammer can be easily mounted it to any emergency vehicle for clear, powerful and consistent sound.

- Two programmable modes
- Seven integrated tones
- Park-kill functionality
- Vehicle specific brackets available
- Made in the USA and includes a two year warranty

▶ TYPHOON FULL-FUNCTION

A 100W siren and integrated controller with clear sound. Engineered for emergency response and pursuit vehicles, the Typhoon features six-programmable backlit buttons and twenty-three police and fire tones.

- PA/microphone included as an attached accessory
- Controller includes rotary dial for siren tones and expanded features
- Siren output types: on/off and momentary
- Air horn, park kill, and radio rebroadcast capabilities
- Integrated headlight flasher
- Includes: typhoon amplifier, full-function typhoon keypad, full-function microphone, full-function microphone clip, 15' RJ45 cable, legend sheet, mounting hardware set

▶ 4200-DL CONTROLLER

The 4200 DataLink Controller is ideal for professional use and emergency vehicles. Universally compatible and fully programmable, the 4200 DL offers control over extensive lighting and siren system.

- Eighteen programmable 10A outputs & two programmable 12V inputs
- Three-position slide switch and two-channel integrated wigwag
- Programmable day/night modes and ignition activation
- Output modes for on/off, momentary, and timer
- Short circuit and overheating protection
- Includes: 4200 DL controller, relay, u-shaped mounting bracket, 15ft. USB cable, RJ45 cables (x2), button legend sheets (x4)





BUILT FOR WILDLAND SERVICE

EXPERIENCE THE **BKR SERIES** PORTABLE RADIOS

**INDUSTRY-FIRST 5 YEAR
STANDARD WARRANTY***

RUGGED HERO ARMOR™*

SALES@TRANS-CARERESCUE.COM

**For the BKR 9000 multi-band portable*





Dräger

We are excited to announce our partnership with Dräger Canada. Our shared values recognize the complexities of today's Fire Service. More than ever there are a multitude of incidents that require Firefighters to step into areas of increased risk both short and long term. Dräger offers an assortment of solutions that can improve firefighting safety in potentially dangerous environments.



➤ FPS® 7000

180-degree, panoramic visibility with triple-seal for maximum reliability and comfort. The large, distortion-free polycarbonate visor uses heat-resistant thermoplastic and prevents fogging of the visor with an innovative design that provides an even distribution of air flow across the mask.



➤ FPS-COM 7000

The Dräger FPS-COM 7000 provides hands-free communication between all wearers of respiratory protection devices during a mission. Excellent voice quality is achieved by removing all interfering noise. Supports up to 10 firefighters on each channel group.



➤ PSS AIRBOSS NFPA-CERTIFIED SCBA

- Comprised of flame-resistant, abrasion resistant, and water-resistant materials
- Quick Connect cylinder attachment- enables a secure change of cylinders in less than 10 sec.
- Three-point, height adjustable backplate- easily adjusts to give firefighter a customized fit
- PSS Airboss offers real-time monitoring including personal alert safety system (PASS) device, data logging for improved post-incident analysis, automatic self-tests and system tests
- Slide-and-lock harness allows harness and waist belt to be connected or removed from the backplate quickly-without tools

- ⊕ Input Pressure 0 - 4500 psi
- ⊕ Battery Durations > 365 hrs normal use (Bodyguard)
- ⊕ Operating Temperature -30°C - 60°C



TRANS-CARE RESCUE LTD. IS AN AUTHORIZED DRAEGER PARTNER FOR SASKATCHEWAN & MANITOBA



TRANS-CARE RESCUE : 1-800-71-RESCU

TRANS-CARE RESCUE LTD. HAS BEEN PROVIDING PROFESSIONAL TRAINING TO WESTERN CANADIAN FIRE DEPARTMENTS AND INDUSTRY SINCE 1981



DURATION: 35 HOURS

▶ **TRAFFIC INCIDENT MANAGEMENT**

The goals of this program include training and following "Safe work procedures" as they are vital to protecting our lives at traffic incidents. Safe work procedures can reduce firefighter/responder deaths and injuries while operating at roadway incidents.

With distracted driving on the increase, driving too fast and unfavorable road conditions, safety is becoming something that requires a lot more training and practice. Emergency services across North America have been working to develop a unified traffic control plan.



DURATION: 8 HOURS

▶ **SCBA TRAINING**

This program is designed for Fire and Rescue Personnel who may be required to use Self Contained Breathing Apparatus under varied situations. The program is delivered over 8 hours including both theory and practical.

Course objectives include identify the types, components and safety features of the SCBA, as well as understanding their use and limitations. Students will practice the use of SCBA in obscured visibility, demonstrate emergency procedures to be used in the event of equipment failure, and more.



DURATION: 20 HOURS

▶ **GRAIN BIN RESCUE**

This course is for Fire & Rescue Departments who may find themselves in a situation where they would respond to an incident, where the victim is trapped in a grain storage facility or other agricultural related confined space.

This specialized course covers training and techniques, Provincial/Federal OH&S regulations, CSA Standards and associated legislation pertaining to grain bin rescue. Participants will understand the physical and environmental hazards encountered by victims and rescuers during a grain bin rescue operation, as well as how to identify proper techniques to protect themselves and the casualty.



DURATION: 20 HOURS

▶ **FARM EQUIPMENT ACCIDENT RESCUE**

The Farm/Industrial Equipment Accident Rescue course was developed to provide agencies who may respond to rural accidents involving farming/industrial equipment with the information required to perform a safe expedient rescue for both the rescuers and the patient.

Accidents involving all types of farm/industrial equipment are discussed with emphasis on the safety of the rescuers as well as the victim(s). This course introduces emergency responders to various types of farm/industrial equipment operation, and the accidents that may occur with each. It is designed for rescuers who may or may not have knowledge of farm/industrial equipment.

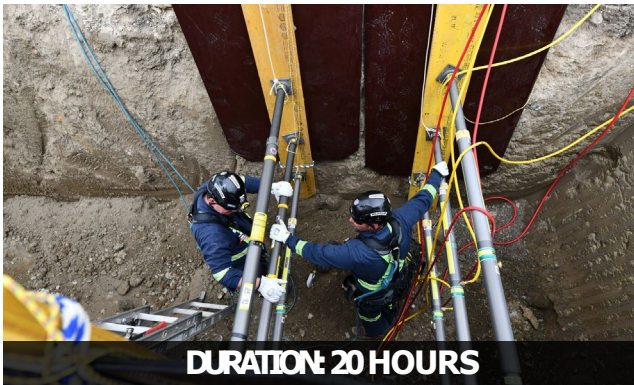


➤ ICE RESCUE

This course is designed for anyone involved in emergency services that may respond to a situation where someone has fallen through the ice or is in trouble in open water conditions.

Participants will cover scene assessments, rescue techniques and equipment, surface ice rescue field training, working on ice, ice/water safety equipment and practical on ice/in water training.

This course exceeds the Standards set in NFPA 1670 and 1006 Guidelines for Cold Water/Ice Rescue.



➤ TRENCH RESCUE

This program is designed to educate rescue personnel on the proper safety procedures to use when responding to the trench rescue situations. Too often responders are not aware of the dangers involved with trench rescue; putting their own life at risk and all too often causing more physical harm to the victim.

This is a 20-hour **hands-on** program with minimal class time. Participants should have a good working knowledge of hand tools, knots, and ropes.



➤ VEHICLE EXTRICATION (LEVEL I)

Rescuers should be properly trained in the care, use and maintenance of their rescue equipment. Proper training ensures that rescuers and their equipment perform when they are needed. This course is designed to provide rescue personnel with the skills necessary to perform a vehicle extrication/rescue in a safe and expedient manner while using a variety of tools and techniques.

Utilizing the incident command system, students are given the opportunity to use extrication equipment in a safe and controlled environment under the guidance of a skilled, experienced instructor.



➤ VEHICLE EXTRICATION (HEAVY RESCUE)

This course covers the subject of extrication, dealing with heavy motor vehicles including buses and trucks. Directed toward urban/rural agencies that are involved with vehicle rescue and have the potential to be involved in a heavy truck/bus extrication situation.

We believe in providing professional training with a real world perspective. Students are given advanced situations where heavy lifting and advanced extrication may be required. Students learn by performing hands on extrication with "real world" entrapment scenarios.

CONTACT US TODAY TO SECURE YOUR TRAINING DATES
PHONE: (306) 283-4496 OR EMAIL: RECEPTION@TRANS-CARERESCUE.COM





Proud Supporter of
 Saskatchewan Motor Speedway
 Saskatoon, SK
 &
 Lakeland College
 Vermillion, Alberta
 &
 Mission Raceway Park
 Mission, BC



TOLL FREE: 1-800-717-3728
LOCAL: (306) 283-4496

TRANS-CARE RESCUE LTD.
225 SERVICE ROAD WEST
P.O. BOX 935
LANGHAM, SK S0K 2L0

SALES@TRANS-CARE³⁸RESCUE.COM
WWW.TRANS-CARE³⁸RESCUE.COM

