



TRANS-CARE RESCUE LTD.

SERVING THE FIRE & RESCUE INDUSTRY SINCE 1981



1-800-71-RESCU

WWW.TRANS-CARERESCUE.COM



TRANS-CARE RESCUE LTD.

225 Service Road West
P.O. Box 559, Langham, SK S0K 2L0
Toll Free: 1-800-717-3728

ABOUT US

Trans-Care Rescue Ltd. offers a wide range of confined space, embankment, ice rescue, water rescue, vehicle extrication, trench rescue, fire, technical rope rescue and other safety related equipment, as well as personal protective gear.

In addition, we offer courses in each of these areas to ensure that you have a thorough knowledge of the equipment and how it operates.

TRAINING FACILITY

Located right off Highway 16 in Langham SK, our training facility can accommodate a variety of class sizes and technical training scenarios. Training can be booked at our facility or we can come to you. For more information contact: reception@trans-carerescue.com

STAFF THAT CARES

We are proud volunteers of local fire departments, sports teams and community events. We are passionate about what we do and pride ourselves on our industry, knowledge and friendly customer care.

FIND US ONLINE





We are a leading supplier of Rescue Equipment in Western Canada. Trans-Care Rescue Ltd. is one of the few suppliers in Canada who carry an extensive inventory of products and parts.

INDEX

SCBA	3
Firefighting	4
Vehicle Extrication	11
AMKUS Rescue Systems	15
Traffic Safety	17
Lighting	19
Speakers, Sirens & Controls	21
Gas Monitoring	22
Rescue Equipment	23
Ice & Water Rescue	27
Training	29



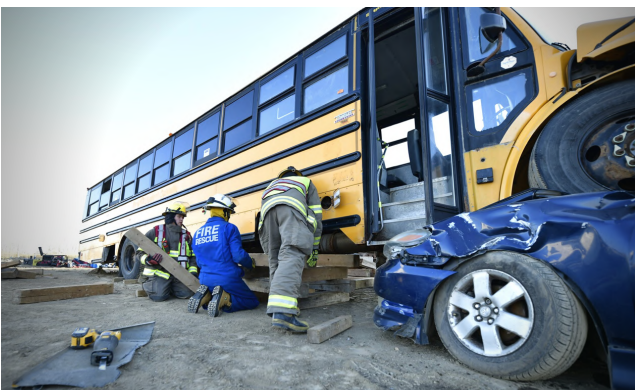
K+S Potash Trench Rescue Training, 2023



Water Rescue Training, 2023



Vehicle Extrication, 2023



Heavy Rescue Training, 2023





Dräger

We are excited to announce our partnership with Dräger Canada. Our shared values recognize the complexities of today's Fire Service. More than ever there are a multitude of incidents that require Firefighters to step into areas of increased risk both short and long term. Dräger offers an assortment of solutions that can improve firefighting safety in potentially dangerous environments.



➤ FPS® 7000

180-degree, panoramic visibility with triple-seal for maximum reliability and comfort. The large, distortion-free polycarbonate visor uses heat-resistant thermoplastic and prevents fogging of the visor with an innovative design that provides an even distribution of air flow across the mask.



➤ FPS-COM 7000

The Dräger FPS-COM 7000 provides hands-free communication between all wearers of respiratory protection devices during a mission. Excellent voice quality is achieved by removing all interfering noise. Supports up to 10 firefighters on each channel group.



➤ PSS® 7000 NFPA-CERTIFIED SCBA

- Comprised of flame-resistant, abrasion resistant, and water-resistant materials
- Quick Connect cylinder attachment- enables a secure change of cylinders in less than 10 sec.
- Three-point, height adjustable backplate- easily adjusts to give firefighter a customized fit
- Sentinel 7000 offers real-time monitoring including personal alert safety system (PASS) device, data logging for improved post-incident analysis, automatic self-tests and system tests
- Slide-and-lock harness allows harness and waist belt to be connected or removed from the backplate quickly-without tools
- Carry handles are rated up to 600 pound pull force to use as a drag handle.

- Weight (backplate & harness) 9.35 lbs.
- Input Pressure 0 - 4500 psi
- Battery Durations > 365 hrs normal use (Bodyguard)
- Operating Temperature -30°C - 60°C



TRANS-CARE RESCUE LTD. IS AN AUTHORIZED DRAEGER PARTNER FOR SASKATCHEWAN & MANITOBA



➤ B1™ TURNOUT GEAR



- 32" length coat
- Easy Grip™ DRD allows for quick response in emergency situations
- Radio pocket with self mic strap lined with moisture barrier
- Low profile 3" collar with hanger loop
- 3.25" Storm Flap provides thermal protection- Closure secures with fire retardant Velcro®
- Easy access Velcro® liner in hem of garment for simple liner inspection
- Low-rise pant waist design with small 3" rear bib for overlap protection
- Quick take-up straps for easy adjustment
- Features Black-ops multi-adjust suspenders- no metal suspender buttons

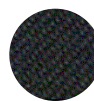
COLOR OPTIONS:



KHAKI



GOLD



BLACK



➤ B2™ TURNOUT GEAR

- 32" length coat, standard in the fire industry
- Zipper/Velcro® closure
- Ergonomic pleated black and shoulders
- Easy Grip DRD for quick response in emergency situations
- Universal flashlight holder
- Self mic strap above radio pocket
- LazerMax trim for greater visibility
- Side take-up straps with low-profile high temp sliders for easy adjustment
- Reverse boot cut pants
- Features Black-ops multi-adjust suspenders

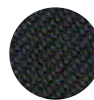
COLOR OPTIONS:



KHAKI



GOLD



BLACK



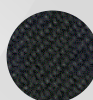
➤ B10™ TURNOUT GEAR

- Zipper/Velcro® closure
- Easy Grip DRD for quick response in emergency situations
- 7" black Kevlar® thumbhole wristers
- Radio pocket with Velcro® antenna opening on each side of flap
- Features Black-ops multi adjust suspenders
- Low-rise wait design with small 3" rear bib and overlap protection

COLOR OPTIONS:



YELLOW



BLACK



TAN



➤ IDENTIFY YOUR DEPARTMENT BY ADDING A HANGING NAME PLATE



FIREFIGHTING



➤ BULLARD LT SERIES STRUCTURAL FIRE HELMET

- High-heat thermoplastic outer shell
- Sure-Lock® ratchet headband and 12 comfort settings
- Nomex® chinstrap with quick-release buckle
- Rip-stop Nomex® ear/neck protector
- Leather ratchet cover
- Removable fire-resistant, absorbent cotton brow pad
- Optional Quick-Attach face shield or goggle system
- **Certified to NFPA 1971-2018 standard**

COLOR OPTIONS:



➤ BULLARD PX CONTEMPORARY FIRE HELMET

- Bullard Tough for structural firefighting and streamlined for confined space access
- Custom comfort; U-Fit helmet headband system offers 36 adjustment settings
- Removable components allow for easy cleaning and decontamination
- Custom leather front and lighting options available
- Optional ReTrak Visor offers one-handed operation, accommodates eyewear, and can be easily removed for cleaning without tools
- **Exceeds NFPA 1971 Standard on Protective Ensemble for Structural Firefighting**

COLOR OPTIONS:



➤ DRÄGER HPS® SAFEGUARD NFPA FIRE HELMET

- Lightweight with an innovative design that ensures optimal weight distribution
- Thermal insulation helps to protect you when fighting fires, while guaranteeing a balanced climate inside the helmet
- One size fits all - the protective helmet covers a wide range of individual head sizes from 50 to 67 cm
- Simple and tool-free removal of the four component parts makes for quick and effective cleaning
- **Approvals: NFPA 1971: 2018 & NFPA 1951: 2020 standards**



➤ PBI PAC II HOOD

- Notched shoulder bib for contoured fit
- Long bib design means less fabric stretch
- Length: 21"
- Most popular style of structural fire fighting hood
- Maintains protective properties after washing
- Color availability: Light Brown
- Certified to meet NFPA 1971 - 2018 standards



HELLFIRE™ FELT INSULATED RUBBER BOOT

- Flame-/heat-resisting rubber
- Waterproof
- Removable Superknit covered, polyurethane foot bed
- Steel Triple-rib Ladder shank
- Stainless steel puncture-resisting bottom plate and Hellfire traction lug sole
- Abrasion-resisting rubber T-toe
- Vulcanized construction
- **Certified to meet NFPA 1971 structural, NFPA 1992 splash over hazmat & CSA Z195-14 Edition 7**



QR14™ STRUCTURAL LEATHER BOOT

- GORE® CROSSTECH® triple-layer moisture barrier protects against bloodborne pathogens
- Waterproof, flame- and cut-resisting leather upper with abrasion-resisting rubber toe
- Steel Triple-rib Ladder Shank
- Extra padding in the shin and ankle protects you from ladder rungs and other impacts
- Proprietary Traction Flex outsole
- Cement Construction
- **Certified to meet NFPA 1971 structural & CSA Z195-14 Edition 7**



KNOCKDOWN ELITE™ 14" LEATHER BOOT

- Waterproof, flame-resisting leather upper with abrasion-resisting rubber toe & heel protection
- Removable dual-density polyurethane insole
- Lenzi L-Protection® flexible, non-metallic, puncture-resisting insole
- Steel triple-rib ladder shank
- Exclusive Vibram® ATS sole with Fire & Ice technology
- Cement construction
- **Meets ASTM F2413-11, NFPA 1971 structural, NFPA 1992 splash over hazmat & CSA Z195 Edition 7**



THE X2

Structural firefighting glove that offers extreme dexterity with no sacrifice to protection. Excellent resistance to cuts, rips and abrasions.



FIRST DUE RESCUE GLOVE

Thermal liner is flame, cut, puncture and abrasion resistant. TPP rating of 8 adds additional flash protection. Features a strategic wear pad on well of thumb and index finger.



BBP RESCUE GLOVE

This glove is finished with a double stitched high dexterity shell, high visibility retro-reflective markings, thermal liner and pathogen barrier.



FIREFIGHTING



➤ WILDLAND FIRE GEAR

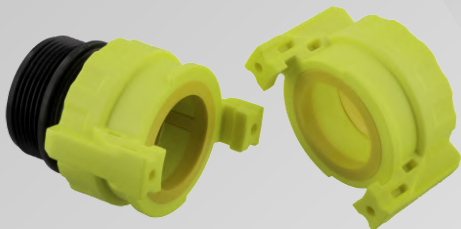
- Lazermax reflective piping helps wildland firefighters stay visible in the toughest conditions with reflective seams on the sleeves, shoulders, back and on the outside leg seams.
- 3M Scotchlite improves nighttime visibility and is found on the upper back, sleeves and pant leg.
- Reliable, high-quality fabric built to last. Featuring elasticized cuffs with rugged take-up straps.
- Ergonomic, athletic fit that maximizes functionality and performance.
- Vertical back pleats and triple knee pleats offer improved flexibility and movement.
- Wildland Fire Coat and Coverall feature a mic strap above radio pocket.



➤ ALPHA BACKPACK (4000-BP)



- Backpack has a capacity of 5 gallons (19 L)
- 1" wide carry handle on top of the backpack.
- 3" wide fully padded, adjustable shoulder and sternum straps.
- Manufactured from strong polyester fabric, protected by a thermoplastic polymer.
- 4" filling opening includes removable debris screen and lid with retaining strap.
- Weighs approximately 40lbs (18.2 kg) when full.
- 3/4" GHT hose connection located at bottom center of backpack.



1/4 TURN QUICK CONNECT



ROCKET NOZZLE WITH SHUT-OFF



FOG/STRAIGHT STREAM NOZZLE WITH PISTOL GRIP SHUT-OFFS



➤ BULLARD WILDLAND SERIES FIRE HELMET



- Easy to adjust Flex-Gear® ratchet sizing suspension
- Thermoplastic shell offers superior impact and penetration protection
- Three goggle clips and Velcro® attachments inside shell
- Adjustable chinstrap and offers comfortable 6-point suspension
- Absorbent cotton brow pad
- **Meets NFPA 1977 specifications**

COLOR OPTIONS:



BLACK



WHITE



RED



ORANGE



YELLOW



BLUE



LIME
YELLOW



DOVE
GRAY



➤ DRÄGER HPS 3500 UNIVERSAL HELMET

- Helmet is ideally suited for forest and large-scale fire fighting, technical assistance, rescue from heights and water rescue
- Comfortable interior fitting with 4-point harness, includes padding of the entire head area
- Features a ventilation system ensuring an optimum climate inside the helmet. To prevent water, sparks and metal chips from entering, it can be closed if necessary
- Multitude of optional accessories and colors available
- **Approvals: NFPA 1971: 2018 & NFPA 1951: 2020**



➤ DUAL CERTIFIED GEAR: WILDLAND & RESCUE

- LazerMax™ Reflective Piping for maximum night-time visibility.
- Triple Pleated Knees allow maximum movement and bending.
- Large 2" x 10" x 10" Expansion Pockets on pants carry plenty of tools and accessories.
- Stand-up Overlapping Collar provides neck protection when needed.
- Radio Pocket with Mic Strap fits a variety of radio manufacturers.
- All Lakeland Dual Certified Gear is UL Certified to NFPA 1951 and NFPA 1977



FIREFIGHTING



ARMTEX® HP™
STRUCTURAL FIREFIGHTING ATTACK HOSE



JAFLINE®
POLYESTER DOUBLE-JACKET FIRE HOSE



FOREST LITE™
TYPE 1 FIRE HOSE

Contact us for Hose ID, Length, Coupling Size & Color Options



➤ FIRE HOSE FITTINGS

Shown above: Adapters - Rocker Lug



➤ UNIVERSAL SPANNER WRENCH

- For 3/4" to 3" pin lug and rocker lug couplings
- Includes gas cock shutoff, pry bar and belt hook eye
- Overall length: 11-7/8"



➤ HEAVY DUTY ADJUSTABLE HYDRANT WRENCH

- For pentagon hydrant nuts up to 1-3/4" from point to flat
- Notched to fit 1-1/4" square hydrant nut
- Spanner for pin lug and rocker lug couplings (1.5" thru 6")
- Plated iron head, 7/8" plated steel handle
- Overall length: 18"



➤ LOW LEVEL STRAINER



- Lightweight aluminum alloy
- Drafts down to 2" from bottom
- Pivoting adjustable elbow
- Base pan design has additional side walls eliminating tank damage
- Meets NFPA Standard
- Female Threaded Standard

➤ 09K SMALL STRAIGHT GATE



- Ideal for use in hose testing and on hydrants, stand pipes and pumps
- Non rising stem with crank handle
- Less than nine turns to open and close
- Metal to metal set
- Lightweight durable aluminum body construction, powder coated for corrosion resistance

➤ SUCTION HOSE PVC LONG HANDLE



- UV protection designed into the hose
- A smooth bore for unrestricted flow
- Flexibility from 65 C° to -40 C°
- Retains a quality wall thickness from 3" to 6" ID

➤ 12K GATE VALVES STRAIGHT



- Extension: 8 1/2"
- Size: 15" H x 8" W
- Weight: 22 lbs.
- Aluminum body and anodized aluminum gate

FIREFIGHTING - DECONTAMINATION



➤ FIRE WASH

- Safely and effectively removes toxins, hydrocarbons and other contaminants from your personal protective ensembles.
- Developed to effectively clean any PPE/Turnout Gear, yet Fire Wash™ is gentle enough to also clean your station wear.
- Industry tested and safe to use on all outer shell fabrics, reflective trims, hardware, knee pads, suede, leather, moisture barriers, and thermal liners.
- Will not degrade the reflectivity of the reflective trim nor will it corrode your gear's metal hardware, i.e., metal snaps, clasps and zippers.
- Eco-Friendly - 100% Biodegradable.



➤ HAND & BODY SOAP

- Lab-designed for firefighters for post-fire decontamination and to eliminate smoky smell in just one wash, Sootsoap draws out even the toughest odors, toxins, pollutants & impurities- without drying you out
- Black in colour and deeply concentrated to coat your skin thoroughly for a deep clean



➤ RESPONDER WASH

- Designed to draw out harmful contaminants, toxins, and other impurities from the skin and hair
- Formulated with activated charcoal, it washes away lingering odor for a detoxifying clean
- Helps to eliminate that smoky smell from your hair and skin



RESPONDER WIPES

Formulated with Micellar Water, an innovative ingredient with cleansing compounds that dissolve dirt, oil, soot, and other hydrocarbons. Micelles gently lift away toxins & contaminants; draws out impurities from pores while hydrating your skin. 3-year shelf life

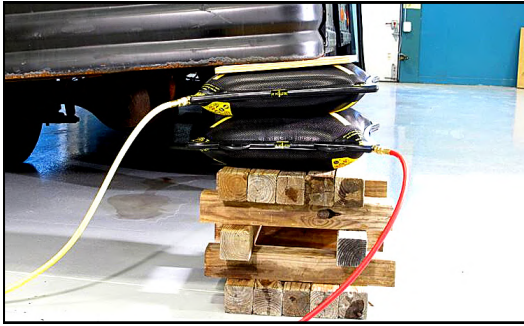


BULLARD WIPES

Extra large cloth, 10"x15". Biodegradable paraben-free, latex-free, and alcohol-free. Designed strong; won't tear to withstand the demands of firefighting. 5-year long lasting shelf life



VEHICLE EXTRICATION

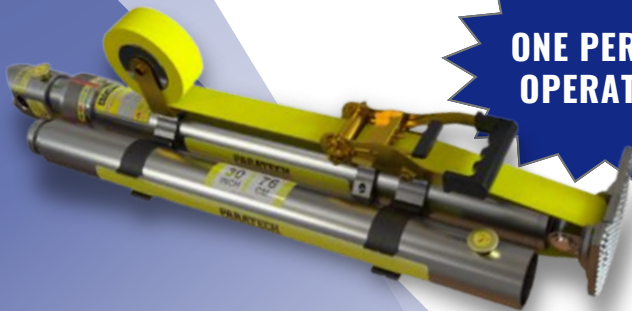


➤ MAXIFORCE AIR LIFTING BAGS

- Made from 3 layers of Neoprene covered Aramid fiber reinforcement and has the power to lift, move or shift weights up to 89 tons
- Each Air Lifting Bag has been subjected to a stringent factory pressure test to assure maximum operator safety.
- Small molded raised bumps provide an interlocking surface for stacking 2 lift bags
- Sizes and specifications shown in table below



ITEM	DIMENSIONS (IN.)	MAX LIFT	MAX LIFTING HEIGHT
KPI-1	6 x 6 x ¾	1.5 US Ton	3.0"
KPI-3	6 x 12 x ¾	3.5 US Ton	3.5"
KPI-5	10 x 10 x ¾	5.4 US Ton	5.4"
KPI-8	12 x 12 x 7/8	8.2 US Ton	6.4"
KPI-10	12 x 18 x 7/8	12.9 US Ton	7.1"
KPI-12	15 x 15 x 7/8	13.7 US Ton	8.1"
KPI-17	15 x 21 x 7/8	19.0 US Ton	9.0"
KPI-22	20 x 20 x 7/8	25.6 US Ton	10.8"
KPI-28	20 x 26 x 7/8	34.0 US Ton	11.8"
KPI-32	24 x 24 x 7/8	38.0 US Ton	13.0"
KPI-35L	15 x 42 x 7/8	39.5 US Ton	9.5"
KPI-44	28 x 28 x 7/8	52.7 US Ton	15.3"



ONE PERSON OPERATION



➤ SUPPORTER X2 VEHICLE STABILIZER

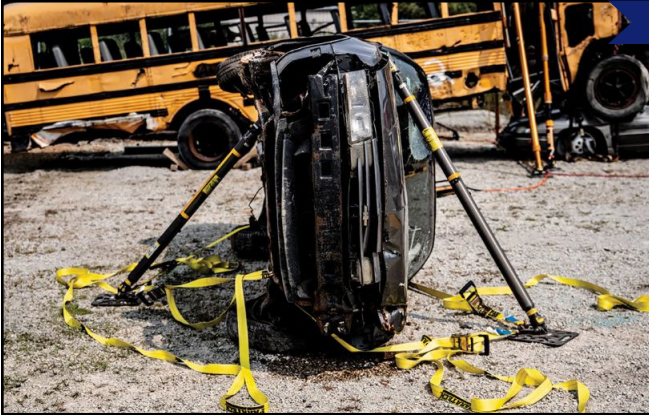
- Maximum load up to 10,000 lbs/ 4535 kg
- Threaded strut extends to 65.4" with twist lock collar
- Shore can reach up 95.4" with attached extension
- Integrated ratchet belt with auto-rewind & belt heat shield
- ABS ratchet function and double ratchet hooks
- 90 degree fold flat base for easy storage
- Weight: 35 lbs

➤ THE BELUGA GLASS CUTTER

- Designed to quickly cut laminated safety glass used in automobile windshields, side windows, rear safety glass, and hurricane glass
- Can cut laminated high-rise glass up to 9mm thick
- The connected drill and cutting head can swivel so you can steer around obstructions
- Attaches to any 3/8" - 1/2" drill
- Cut an entire windshield out in less than a minute!

VEHICLE EXTRICATION

VEHICLE STABILIZATION KITS BY **PARATECH**[®]



STANDARD VSK

- Maximum load up to 40,000 lbs./ 18,144 kg with a 4:1 safety factor
- Designed to stabilize everything from small vehicles to large commercial/municipal vehicles

KIT INCLUDES:

- (x2) AcmeThread Strut (25 - 36 in.)
- (x2) Strut Extension (12 in.)
- (x2) Strut Extension (24 in.)
- (x2) Multi-Base
- (x2) Hinged Base w/ Anchor Ring (12 in.)
- (x4) Ratchet Belt w/ Finger Hook (27 ft.)
- (x2) Tie Down Keys w/ J Hook



HIGHWAY VSK

- Maximum load up to 80,000 lbs./ 36,287 kg with a 4:1 safety factor
- Designed for multiple vehicles, longer reach and heavier weights such as a fully loaded tractor-trailer

KIT INCLUDES:

- (x2) AcmeThread Strut (25 - 36 in.)
- (x2) AcmeThread Strut (37 - 58 in.)
- (x2) Strut Extension (12 in.)
- (x2) Strut Extension (24 in.)
- (x2) Strut Extension (36 in.)
- (x4) Multi-Base
- (x4) Hinged Base Plate w/ Anchor Ring (12 in.)
- (x4) Ratchet Belt w/ Finger Hook (27 ft.)
- (x4) Tie Down Keys w/ J Hook



INTERSTATE VSK

- Maximum load up to 120,000 lbs./ 54,534 kg
- Designed to stabilize multiple industrial or commercial vehicles in complex collision scenarios

KIT INCLUDES:

- (x2) LongShore Strut 304 (36 - 50 in.)
- (x2) LongShore Strut 406 (48 - 73 in.)
- (x2) LongShore Strut 610 (72 - 116 in.)
- (x3) LongShore 235 Extension (24 in.)
- (x3) LongShore 435 Extension (48 in.)
- (x4) V Base
- (x4) Contour Base
- (x4) Multi-Base
- (x6) Hinges Base Plate w/ Anchor Ring (12 in.)
- (x2) Chain 20' x 3/8" - grade 100
- (x6) Ratchet Belt w/ Finger Hook (27 ft.)
- (x4) Tie Down Keys w/ J Hook
- (x2) Non Slip Neoprene Pad

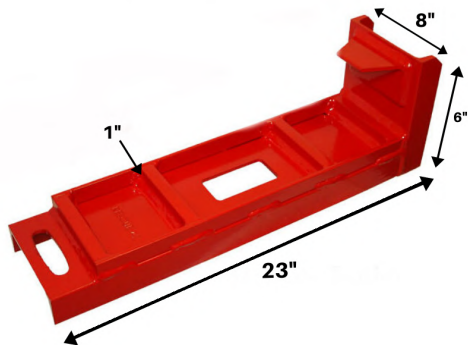
****PARATECH PRODUCTS THROUGH TRANS-CARE RESCUE ARE ONLY AVAILABLE IN SASKATCHEWAN & MANITOBA****



TRANS-CARE RESCUE : 1-800-71-RESCU

VEHICLE EXTRICATION

RESCUE 42



➤ O-PLATE™ JUNIOR

- Multipurpose extrication tool used for vehicle stabilization and hydraulic tool support
- Protects against rocker panel collapse
- Acts as a wheel pull/edge protector
- Provides wheel traction for winching
- Can be used as a lift jack extender or base
- 3:1 safety factor
- Rated pulling strength: 8,000 lbs.
- Lifetime warranty



➤ THE LARGE SHARK™

- Vehicle stabilization tool for rescue crews that regularly use step cribbing
- 16.5" tall; it can stabilize most high clearance vehicles
- Can be used upside down as a wedge anchor
- Functions as a wheel chock
- Positive grip teeth bite into boards, rocker panels and road surfaces
- Collapsible & stackable for compact storage and easy handling



➤ TELECRIB® STRUTS

- No couplings, twist locks - just slide out and pin it
- 18,000 lb max working load
- 2:1 safety factor
- Removable Base Plate articulates 180°, accepts ratchet strap hooks or picket
- Safety interlock system prevents over-extension of strut tubes
- Universal Combi-head with piercing point, 3/8" chain slot, and 2x4 / 2x6 center support with nail holes
- Large, yellow, glove friendly pins



➤ TELECRIB® STRUT JACK

- A removable 8,000 lbs jack which fits over the strut body and gives the rescuer a controlled means for lifting or lowering a load.
- 15" range to raise or lower the entire extension of both strut sizes by pinning the strut and resetting the jack
- Because it is removable, it can be moved from strut to strut as needed
- Features a base hole to convert Strut into a Ram
- Compact for easy storage



VEHICLE EXTRICATION

NEW



SOFT PATIENT PROTECTION

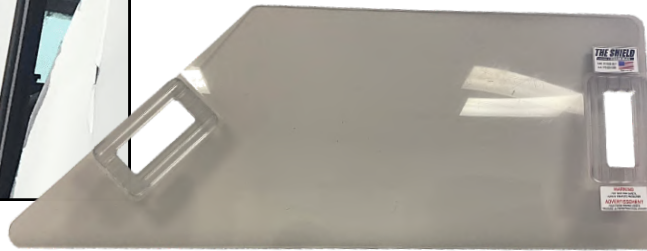
- Constructed of 20 mil clear fire-retardant PVC vinyl which allows for total transparency to facilitate patient monitoring.
- Soft protection is UL-214 classified flame retardant and meets NFPA-701 standards for flame propagation.
- It is completely waterproof and has a high abrasion resistance.
- Resists mildew, oils and many chemicals, and can be cleaned with warm water and a mild cleaning solution.
- 4' x 5' Soft Protection (Single Patient)
- 5' x 7' Soft Protection (Multiple Patients)

NEW



HARD PATIENT PROTECTION

- One piece mold injected, ballistic grade polyurethane.
- Resists abrasion and is transparent for patient monitoring.
- Hard protection meets the UL-972 standard for impact resistance
- Can be easily cleaned with warm water and a mild detergent.
- Dimensions: 15" wide x 39" long



GLAS-MASTER

- Glass removal tool helps to expedite the removal of all vehicular glass & reduce the risk of trauma to patients
- Manually operated, self supported, no electricity or hydraulics required.
- This versatile tool can be used on fiberglass, wood and plaster, as well as used for underwater rescue. Features a spring loaded center punch and a new blade design that reduces windshield fragmentation by 33% over the conventional blade.



QUICK-CUT RESCUE TOOL

- Can easily cut through seatbelts, harnesses, stretcher straps, etc.
- V-shaped blades can cut through 10,000-strength webbing in just one stroke.
- Made out of high-strength aluminum alloy with stainless steel blades
- Specs: 9.5" long; weighs roughly 1 lb.
- Dzus tool in tip can easily open aircraft panels



AMKUS RESCUE SYSTEMS

NEW MIDSIZE RESCUE ION TOOLS



ION iC650 CUTTER

- With longer run times, high cut ratings, and an all-aluminum body, the midsize cutter is designed to withstand extreme conditions while operating at peak performance
- Uses a DeWALT Flexvolt battery platform to share batteries among your fire rescue tools.

- + **Weight** 49.5 lbs.
- + **Cutter Opening** 6.3 in.
- + **Open/Close Rate** 15 sec.

DeWALT FLEXVOLT (9AH) 2 PACK

- 20V/60V Max lithium ion battery pack
- Dual-voltage for ultimate flexibility
- 180 watt hours of energy in each battery pack.
- Silicone encapsulated module helps keep dust and debris out
- LED charge status display on battery
- Compatible with all AMKUS ION battery powered rescue tools



ION iS290 SPREADER

- Quicker extrication times with a 4-stage pump that provides maximum speed in loaded or unloaded conditions.
- The short profile allows users to quickly perform the most complicated extrication techniques
- Optional ERTs. Pairs with ERTs (extended reach tips) to increase the spread up to 8 inches without loss of power

- + **Weight** 49.6 lbs.
- + **Max Spreading Distance** 37"
- + **Highest Spreading Force** 9,830 lbs.
- + **Open/Close Rate** 12 sec.



ION iCT614 COMBI

- Combining the power of our spreader and cutter, the midsize combi tool is the perfect "first on the scene" rescue tool
- Fast, lightweight, and compact—maximizing maneuverability during tight vehicle extrications and can easily be used for forcible entry situations
- Rotating Handle allows tool to be repositioned without the end user needing to change hand positions.

- + **Weight (without tips)** 49.5 lbs.
- + **Max Spreading Distance** 13.9 in.
- + **Highest Spreading Force** 8,000 lbs.
- + **Cutter Opening** 12 in.
- + **Open/Close Rate** 15 sec.

AMKUS RESCUE SYSTEMS

AMKUS
RESCUE SYSTEMS



➤ ION iCT716 COMBI TOOL

- A compact, all-metal body combination rescue tools that combines the capabilities of a cutter and spreader
- Rotating handle allows tool to be easily repositioned
- All AMKUS tools are operable down to -30° C
- Powered by a DEWALT® Flexvolt 60V battery
- High Intensity LED lights located in the handle for increased visibility
- Cutter Opening: 13.8"
- Max Spreading Distance: 15.6"
- Max Spreading Force: 320,000 lbs.



➤ ION iTR500 RAM

- All-metal body body telescoping ram with the highest pushing force available in a battery powered unit
- Powered by a DEWALT® FLEXVOLT™ 60 Volt battery
- Maximum Extended Length: 50.5 inches
- Highest Spreading Force, Piston 1: 48,540 lbs.
- Lowest Spreading Force, Piston 2: 22,390 lbs.



➤ ION iS320 32" BATTERY SPREADER

- Includes removable AMKUS Gator Tips for a reliable grip that won't rip sheet metal
- Extended Reach Tips (ERT) increase the spread by an additional 8" without significant loss of power
- Gator Tips and ERT's utilize a push button release, so they're easy to install or remove with gloved hands
- High Intensity LED lights located in the handle
- 4-stage pumps provide amazing speed under both loaded and unloaded conditions
- Powered by a DEWALT® Flexvolt 60V battery
- Max Spreading Distance: 40" with ERT Tips
- Max Spreading Force: 39,500 lbs.



➤ ION iC750 CUTTER

- Cutter blades and center bolt design allow access to difficult cuts
- Rotating handle allows the tool to be easily repositioned
- Status LEDs offer user feedback on the tool status
- Center positioning of the battery and controls provides better protection, operator safety and maneuverability
- 4-stage pump provides amazing speed under both loaded and unloaded conditions
- Powered by a DEWALT® Flexvolt 60V battery that can be shared with other tools as needed.
- Cutter Opening: 7"
- Cutter Rating: A8/B9/C7/D9/E9/F4



➤ EXTENDED REACH TIPS (PAIR)

- Increases the spread up to 8"
- Unique construction eliminates loss of power
- Built-In push button release so tips are easy to install or remove-even with gloved hands
- Compatible with all AMKUS battery powered and hydraulic spreaders

➤➤ EMAIL OUR SALES TEAM FOR PRICING INFO: SALES@TRANS-CARERESCUE.COM



TRANS-CARE RESCUE : 1-800-71-RESCU

TRAFFIC SAFETY



➤ 16" TRAFFIC BATON WITH BRIGHT LED LIGHTS

- Water & shock resistant and come with a handle strap and metal belt clip
- Operates on two C-batteries (not included)
- 2 Light modes: On, Flashing
- Visible over 200 yards away
- Lifespan of up to 100,000 hours



➤ MAGNETIC LED DIRECTION SIGN LED ARROW BOARD

- Lighted Sign has visibility over 800 meters
- Lights will run for 2-3 days on continuous use
- Each reflective direction arrow includes 9 bright Amber LED light bulbs
- Easy On/Off power button located on front of the sign
- Includes black nylon bag; simply roll up and store
- Powered by 3 AA batteries
- Dimensions: 33" W x 17.5" H x 0.25" D
- Weight: 2.8 lbs



Side #1



Side #2

➤ 18" STOP & SLOW PADDLE WITH BRIGHT LED LIGHTS

- High power white LEDs in lettering
- Rechargeable lithium ion battery
- 2 Light modes: On, Flashing
- Visible up to 1 mile away
- Lightweight and durable design
- Total weight: 2.1 lbs



CONE TOPPER



STARS LANDING KIT

▶ ULTRABRIGHT CLASS 2 PUBLIC SAFETY VESTS

- 6 Point breakaway
- Performance cut offers max comfort and allows access to bunker gear pockets or portable radio at waistline
- Chevron reflective pattern on front and back offers high visibility
- Meets ANSI/SEA 107-2020
- Standard imprints include: FIRE, EMS, POLICE & SHERIFF
- Custom imprints available

VEST COLOR OPTIONS:



RED



PINK



ORANGE



pi·lit



▶ PI-LIT SEQUENTIAL ROAD FLARES PROFESSIONAL RECHARGEABLE

- Automatic synchronization of flares; no programming required
- 20+ hour runtime (flash pattern dependent)
- 4 flash patterns: 2 sequential, 1 simultaneous, 1 steady-burn
- Reverse the direction of the sequence with a push of the button
- "Pair mode" allows for multiple sets to be synchronized
- Dual purpose carrying case charges all flares at once
- 6 hour recharge time from completely depleted battery
- Kit sizes: 10 set, 6 set, 4 set
- Kit includes: Flares, carrying/charging case, vehicle plug, wall plug
- Also available in a Commuter Style set, powered by alkaline battery

PI-LIT COLOR OPTIONS:



ORANGE



RED



BLUE



AMBER



GREEN

▶ EMERGENCY RESPONDER COMPACT® SIGNS

- Permanently mounted to a foldable crossbrace
- Crossbracing is equipped with a single trigger release mechanism for easy deployment and take down
- Made from Reflexite® Super Bight material, signs are highly visible in daylight and headlights
- Available in 36" or 48" size
- Custom signage available



▶ TRAFFIC CONE WITH HI-COLLAR

- Available in 18" or 28" height



LIGHTING



▶ **COMMAND+ LOPRO WHITE & GREEN LED HELMET LIGHT**

- 3 modes: Low (32 lumens), Medium (78 lumens) & High (100 lumens)
- Low profile design enables most external 4" and 6" face shields to be raised and lowered without interference
- The combination of white and green LEDs offers improved depth perception, color rendition and smoke cutting ability
- Meets the requirements of NFPA 1971 when used with the silicone strap
- Rear red flashing LED in the battery pack can be seen from over 1 mile away
- Rechargeable or battery powered options available



▶ **C-CLAMP SIDE MOUNTED HELMET LIGHT**

- Features a 275 lumens focused beam; for use in structural firefighting & rescue
- Impact resistant and meets NFPA fire resistant requirements
- Works in all-weather conditions and can be submerged underwater
- Features a strike bezel that is strong enough to shatter a car windshield
- Rear safety LED; on/off switch flashes green when the light is activated and can be seen from over 1200 feet away



▶ **DUAL LED SENSOR HEADLIGHT (HL-8R)**

- 475 lumen white LEDs
- Beam distance: 90 meters
- 60° rotational head
- Run time: 4 - 35 hours
- Used as a long distance spot beam and wide angle flood thanks to side SMD LED's
- IK07 shock resistant, IP65 dust & water resistant
- Includes an adjustable non-slip silicone lined headband & Type C charging cable



▶ **RIGHT ANGLED LED ATEX TORCH**

- 350 lumen white CREE LED, 65000k
- Beam distance: 228 meters
- Run time: 6.5 - 13 hours
- Intrinsically safe for use in hazardous locations
- Stainless steel belt/pocket clip
- IP65 dust & water resistant
- Ultra strength polycarbonate housing; chemical and corrosion resistant



▶ **L-1800 RECHARGEABLE LED LANTERN**

- Industrial LED lantern with long-range spot beam
- Base features a 1000 lumen COB work light; providing a flood of light
- Lumens: 1800
- Beam distance: 760 meters
- Run time: 9 - 390 hours
- Red static & flashing mode for signaling & night vision
- Built-in is a USB power bank for charging devices





▶ RESPONDER RIGHT ANGLE

- Light output: 220 Lumens
- Beam distance: 490 meters
- Runtime of 17 hours with 6AA alkaline batteries
- Wide eye lens
- Waterproof to one meter and withstands a 3 ft. drop
- Slim profile keeps light close to your body to prevent entanglement
- Intrinsically safe, meets NFPA 70 504.2 (2008)



▶ RESPONDER PRO RIGHT ANGLE LED

- Light output: 275 Lumens
- Beam distance: 458 meters
- Run Time: 8 Hours (high) / 14 Hours (low)
- Strobe - Emergency Lighting mode, and wide-eye lens
- Waterproof to one meter and can withstand a 3 meter drop
- Intrinsically safe, meets NFPA 70 504.2 (2008) and NFPA 1901-14.1.11.2 (2009)
- Offered with interchangeable power sources in both rechargeable LI battery and AA Alkaline



▶ QUANTUM SERIES

- Meet the Quantum Series: Patented technology allows you to buy one product, at single-color cost, and unlock multi-color mode when required.
- With single, dual, tri, and quad modes remotely programmable via an app, you will have endless flexibility under one part number.
- Available in 4 configuration types: Single, Dual, Tri, and Quad across a family of 6 light bars, 5 light sticks, and 20+ vehicle specific inner bars.
- All-in-one: Skip the long production wait times
- Field Programmable: 60 Days to lock in your color option



T3 SURFACE MOUNT

T3 is fiercely bright, affordable and can be mounted almost anywhere on your vehicle. 14 flash patterns, including brake, tail and steady on. Five bracket options: Rotating, License Plate, Single L-Bracket, Double L-Bracket, Hood Bracket.



FUSION-S SURFACE MOUNT

User configurable in red, blue, amber, white, and green, the Fusion-S offers the user a new and improved 40-degree optical light spread for long-range visibility. Flood mode, cruise mode, stop, turn and tail pattern compatible.



FUSION DOUBLE FSM

Five color options: red, blue, amber, green, or white. Features 40° light spread for long-range visibility. Syncs with T3, Cannon, Mirror Puck, Quad Surface Mount. Three user-programmable modes with flood, cruise, and stop/tail/turn pattern capabilities



BEACON AM600

Single-color SAE Class 1 Certified LED beacon with multiple mounting options and 20 flash patterns including single, double, triple, quint, rotating, reverse rotating, combos. Sync up to six units. Available colors are amber, red, blue, white and green.



SPEAKERS, SIRENS & CONTROLS



▶ TRITON 100W SPEAKER

Engineered for 85° sound dispersion and housed in a compact, low-profile, durable polycarbonate housing, the Feniex Triton is the ideal speaker for any police, fire or EMS vehicle.

- Compact design fits behind vehicle's grille or push bumper
- Universal siren compatibility
- Meets or exceeds SAE J1849 standards
- Dimensions: 7" x 7" x 3"
- Frequency Response: 600-2700 Hz



▶ HAMMER 100W SPEAKER + SIREN

All-in-one universal low-frequency siren. With siren, amplifier and speaker combined within a single, easy-to-install unit, the Hammer can be easily mounted to any emergency vehicle for clear, powerful and consistent sound.

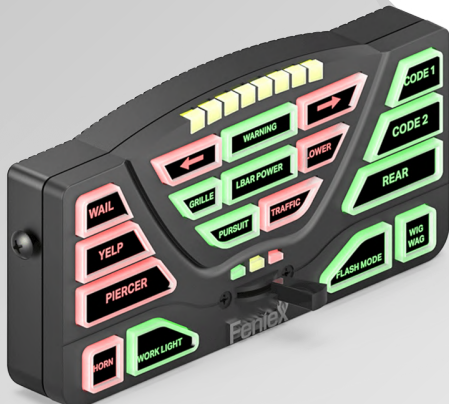
- Two programmable modes
- Seven integrated tones
- Park-kill functionality
- Vehicle specific brackets available
- Made in the USA and includes a two year warranty



▶ TYPHOON FULL-FUNCTION

A 100W siren and integrated controller with clear sound. Engineered for emergency response and pursuit vehicles, the Typhoon features six-programmable backlit buttons and twenty-three police and fire tones.

- PA/microphone included as an attached accessory
- Controller includes rotary dial for siren tones and expanded features
- Siren output types: on/off and momentary
- Air horn, park kill, and radio rebroadcast capabilities
- Integrated headlight flasher
- Includes: typhoon amplifier, full-function typhoon keypad, full-function microphone, full-function microphone clip, 15' RJ45 cable, legend sheet, mounting hardware set



▶ 4200-DL CONTROLLER

The 4200 DataLink Controller is ideal for professional use and emergency vehicles. Universally compatible and fully programmable, the 4200 DL offers control over extensive lighting and siren system.

- Eighteen programmable 10A outputs & two programmable 12V inputs
- Three-position slide switch and two-channel integrated wigwag
- Programmable day/night modes and ignition activation
- Output modes for on/off, momentary, and timer
- Short circuit and overheating protection
- Includes: 4200 DL controller, relay, u-shaped mounting bracket, 15ft. USB cable, RJ45 cables (x2), button legend sheets (x4)

GAS MONITORING

Dräger



➤ X-AM® 2500

- Large, easy to read, liquid-crystal display
- Accurately detects flammable gases and vapors as well as O₂, CO, NO₂, SO₂ and H₂S
- When a gas alarm occurs, the reading for the sensor in alarm will be highlighted and will alternate with the alarm level indication of A1 or A2
- Can operate for more than 12 hours with either alkaline batteries or with rechargeable NiMH batteries.
- An optional external pump with a hose up to 45 m / 147 ft long is available for use in tanks and shafts or when searching for leaks.

➤ ACCURO PUMP FOR GAS DETECTION TUBES

The Dräger-Tube pump accuro allows you to use the established Dräger-Tubes to take measurements under extreme conditions. The easy-to-use tubes have already been calibrated and form a perfect unit with the tube pump.



- + This manual pump is used for spot measurements such as the detection of concentration peaks, confined space entry, worst-case scenarios etc.
- + Integrated stroke counter for safe control
- + Can be used in explosive areas
- + Easily operated with one hand and enables a reliable measurement in difficult-to-access places.

➤ GX-3R PRO GAS MONITOR

- World's smallest 5 gas monitor weighing only 4.58 ounces
- Can comfortably be clipped within a worker's breathing zone
- Dimensions: 2.9" W x 2.6" H x 1.06" D
- In addition to monitoring standard confined space gases, LEL, O₂, CO, & H₂S, the GX-3R Pro has a 5th channel where you can add infrared or toxic gas sensors
- Comes equipped with Bluetooth wireless communication, man-down alarm, and the choice of alkaline or rechargeable power supply
- Features water and dust resistant design (IP66/68) & includes a 3 year warranty



RKI
INSTRUMENTS

WE OFFER A LARGE SELECTION OF FIXED AND PORTABLE GAS DETECTION SOLUTIONS
SINGLE GAS, 4 GAS, 5 GAS, CALIBRATION STATIONS, DOCKS & MORE

➤➤➤ EMAIL OUR SALES TEAM FOR PRICING INFO: SALES@TRANS-CARERESCUE.COM



TRANS-CARE RESCUE : 1-800-71-RESCU

RESCUE EQUIPMENT

seek
thermal



➤ ATTACK PRO+ THERMAL IMAGING CAMERA

- NFPA 1801: 2021 Certified
- 320 x 240 High- resolution sensor; enhanced clarity and colorization displayed at 25Hz
- High impact and heat resistant; can operate up to 260° C (500° F)
- Includes the camera, two removable batteries and a charging dock
- Features a 300 lumen LED flashlight
- Long lasting rechargeable battery that offers greater than 6 hours of continuous thermal imaging
- Detection distance range of 12" to 1000 ft.
- Find the seat of the fire and make decisions faster when every second counts. See through smoke, visualize your plan, and execute



➤ FIREPRO 200 PERSONAL THERMAL CAMERA

- Thermal cameras provide firefighters with the ability to regain orientation in low visibility or blackout conditions
- Mixed Gain technology allows firefighters to see detail in the hottest and coolest regions of the scene at the same time without freezing and switching modes
- Resolution: 200 x 150
- Field of view: 27° x 35°
- Detection: -20°C to 550°C
- Imaging: Mixed gain mode with SV1
- Flashlight: 300 Lumen LED
- Detection: -20°C to 550°C

**KEEP IT
CLOSE WITH A
GEAR KEEPER**



➤ FIREPRO 300

- Affordable and lightweight thermal camera to enhance situational awareness and increase firefighter safety
- Featuring a high-resolution 320 x 240 sensor, FirePRO 300 provides firefighters with the ability to regain orientation in low visibility or blackout smoke conditions.
- Mixed Gain technology allows firefighters to see detail in the hottest and coolest regions of the scene at the same time without freezing and switching modes
- 90° viewing angle makes pointing the camera as easy as a smartphone
- Six hour battery life. Long lasting rechargeable battery ensures FirePRO 300 is always ready (charging dock included)
- Comes with a free 2 year standard warranty

RESCUE EQUIPMENT

JUNKIN



➤ BREAK-AWAY PLASTIC STRETCHER

- Designed to rescue injured persons from locations where lengthy foot travel is mandatory
- The stretcher breaks into two halves which can be back-packed to the point of rescue and assembled in seconds
- Positive-locking quick-release pins secure two halves together.
- Includes four standard straps
- Dimensions: 84.5" L x 24" W x 7.5" H
- Weight: 32 lbs
- Load Capacity: 1200 lbs

FERNO



➤ MULE II LITTER WHEEL WITH ADJUSTABLE HANDLES

- Single wheel design makes it ideal for narrow trails, allowing agility, versatility and ease of movement even in the roughest terrain
- The large, lightweight all-terrain wheel offers tracking ability and shock absorption for smooth and comfortable patient transport
- Fast ratchet securing system locks basket stretcher with two straps and two rubberized steel hooks
- Quick-release pins, each with a wire lanyard, lock into position with ease on each side of the handle
- Its unique uni-support design allows the wheel to be quickly and easily removed for compact storage and transport
- Features 8 handle adjustments

SKEDCO



➤ SKED® BASIC RESCUE SYSTEM

- Rescue stretcher for confined space, high angle or technical rescue, and traditional land based applications
- Comes equipped for horizontal hoisting by helicopter or vertical hoisting in caves or industrial confined spaces
- When the patient is packaged, the stretcher becomes rigid
- Durable plastic provides protection for the patient while allowing extrication through the most demanding confined spaces
- Available in "International Orange" and "O.D. Green" for military, S.W.A.T. and other tactical situations



TRANS-CARE RESCUE : 1-800-71-RESCU

RESCUE EQUIPMENT



➤ AVAO® BOD FAST HARNESS

- Certifications: ANSI Z359.11, NFPA 1983 class III, CSA Z259.10
- The AVAO BOD FAST fall-arrest, work positioning and suspension harness is designed for greater comfort in all situations
- Wide, semi-rigid waist belt and leg loops provide excellent support
- Lightweight, breathable construction maximizes air flow
- Waist belt and shoulder straps equipped with self-locking DOUBLEBACK buckles for quick and easy adjustment
- Leg loops equipped with FAST buckles for quick and easy fastening and unfastening without loss of adjustment, even while wearing gloves



➤ VERTEX® CANADA VERSION

- Very comfortable, thanks to its six-point textile suspension, which adapts perfectly to the shape of the head
- CENTERFIT feature allows perfect centering of the helmet on the head, thanks to its two side adjustment wheels
- Adjustable-strength chinstrap makes it ideal for both work at height and on the ground.
- Shock absorption achieved through deformation of the outer shell
- Unventilated outer shell protects against electrical hazards, molten metal splash and flames
- Fits head circumference of 53 - 63 cm



MAESTRO S & L
Descender for Technical Rescue



SPIN L2
Very High-Efficiency
Double Pulley with Swivel



ASAP LOCK
Mobile Fall Arrester
with Locking Function



WILLIAM
Lightweight Asymmetrical
Large-Capacity Carabiner



TWIN RELEASE
Releasable Double Progress
Capture Pulley for Haul System



➤ 1/2" HTP STATIC ROPE

- Super-durable, low-stretch rope features a unique sheath construction that inhibits picking and stays firm for effective handling despite the load
- Its strength and durability make it a great choice for specialized rigging, speed lines and hauling applications.
- Certifications: ANSI Z359, NFPA 1983



RESCUE EQUIPMENT



GRAIN RESCUE EXTRICATION KIT



➤ GREAT WALL OF RESCUE

- When the panels are inserted into the grain mass, the grain is removed from around the victim to relieve pressure and to facilitate a safe & expedient rescue
- Made of lightweight aluminum, rescuers can easily lift a panel up and join with another; sleek finish allows the panels to slide easily into grain.
- Individual panels can be aligned to form a variety of configurations dependent on the rescue situation: round tube, curved wall, straight all and barrier wall
- Includes a carrying case, step, 3 ft. long pipe and 12" x 24" rescue platforms which help to distribute a rescuers weight, making it easier to walk in grain, lessen the chance of grain movement and reduce pressure of body weight felt by victim

➤ GRAIN RESCUE AUGER

- Augers out grain quicker than scooping when freeing the trapped victim
- Once placed inside the Great Wall of Rescue, the auger will quickly expel the unwanted grain
- Weighing only 26 lbs. the Rescue Auger can expel grain at 1.5 bushels/minute
- Easy to use with a variety of grain - corn, wheat, milo, soybeans and more
- Easily operated by any power drill

➤ KIT INCLUDES 6 PANELS, 1 STEP, 1 PIPE, 4 RESCUER PLATFORMS & 1 BAG



➤ THALES SAFETY CHEST COLLAR & EVACUATION TRIANGLE

- The Thales safety chest collar and evacuation triangle is designed for rescue operations, such as grain bin rescue and cable lift evacuations.
- The chest collar configuration allows the evacuee to be secured in an emergency and then evacuated with the triangle.
- Passing from the chest collar configuration to the triangle configuration is quick with the use of three hook and loop straps.
- The ergonomic shape of the seat and the presence of shoulder straps makes suspension more comfortable than with a classic evacuation triangle.
- Color-coding differentiates the back and seat, as well as the different straps and closure system, making it easier to put on the evacuee.



ICE & WATER RESCUE

▶ OCEANID RAPID DEPLOYMENT CRAFT (RDC)

- Standard package includes carrying bag, floor top carpet, repair kit, two paddles, paddle bag, tow strap assembly, & air fill manifold
- Uprturned ends allow rescuers to glide boat's open end over victim's victim's head while remaining above water at all times
- Floor is open at each end, allowing two entry points
- The freeboard height is only inches, enabling a rescuer to easily pull a victim into the boat
- The RDC will store in a 2' cube, inflate in a heartbeat, and can easily be carried by one person
- Designed to withstand severe use conditions for many years and includes a 12 year warranty



▶ NRS HAVOC HELMET

- DialFit system lets you quickly and easily adjust the fit to accommodate almost any head size (Fits head circumference 21.5"-23")
- Plush FIT pads in key contact points provide extra comfort
- Six ventilation/drainage ports let air in and water out
- ABS plastic shell is lightweight and durable
- Glued-in EVA foam liner offers excellent impact protection
- Meets CE 1385 standards for whitewater safety



▶ EVAC EP220 GEAR PAK

- Made of 1000 Denier Cordura nylon and extra heavy webbing for strength and durability.
- Protects your gear, and comes with a mesh window to aid in air circulation and drying.
- Includes an internal pocket for gloves and other equipment.
- One of the largest Gear Paks you can buy!
- Dimensions: 18" L x 18" W x 20" H



75' WATER RESCUE PROFESSIONAL THROW BAG

This self draining throw bag is designed for water rescue professionals to allow for maximum throwing efficiency and ease of re-loading even with a gloved hand. The 75' rope is 3/8" in diameter, floats, and has a minimum 2000 lb breaking strength with a nylon core and polypropylene, yellow and orange weave sheath. Measures a true 75' from knot end to knot end, making distance measuring much easier.



WATER RESCUE ROPE

A highly buoyant rope provides rescue personnel with a range of options to meet their specific needs. Ideal for swift water, flood, and ice rescue applications.

- Sold by the meter
- Diameter: 7/16"



ICE & WATER RESCUE



➤ SENTINEL™ SERIES

- Constant wear water rescue dry suit that is waterproof, breathable, and ideal for flood, swift water, and ice rescue
- Mobility Based Sizing offers a semi-custom fit without the custom price tag
- Rapid Repair Technology™ enables users to self-replace neck and wrist seals and repair small leaks in an hour or less
- Nylon reinforced elbows, knees, seat, and overcuffs
- Molded foam knee and elbow pads help prevent injury
- Integrated GORE-TEX® dry socks
- Two arm pockets and two thigh cargo pockets



➤ UNIVERSAL SWIFT WATER RESCUE VEST

- 25 lb (111 N) Buoyancy - Layered flotation foam increases comfort to improve operational performance both in and out of the water
- Durable harness with 2" webbing tested to 730 lb requirements after accelerated weathering
- Quick donning with 7 adjustment tabs to create a customized fit for users with chest sizes from 30-58" and features MOLLE webbing on both shoulders, pockets and back
- NFPA 1952 compliant



➤ INDUSTRIAL MESH PFD VEST

- Offers maximum visibility, mobility, cooling and comfort
- Mesh shoulders offers mobility and comfort
- Large front pockets with Velcro closure
- Side adjustment for dual sizing
- SOLAS reflective tape across the front and back of the vest



➤ PICK-OF-LIFE ICE AWLS

- Pick-of-Life awls are for self-rescue, allowing you to crawl on top of the ice using the picks as traction
- Picks float on top of water and are bright orange in color for high visibility
- 4" L plastic handles each have a retractable sheath covering the 1" L picks making storage simple
- 5 1/4' cord that attaches the 2 handles has reflective ticking for low-light conditions



ICE COMMANDER™ RESCUE SUIT

Flotation and insulation performance of a zip-in buoyancy liner allows users to immerse for long periods of time in icy cold water and maintain mental and physical capabilities. Modular suit is completely waterproof with a watertight hood, integrated gloves, attached boots and flexible full-length zipper. Integrated chest harness allows attachment to tether lines, ice awl pockets for storage, rubber gloves, reinforced knees and non-slip rubber soles on the attached boots. Liner can be unzipped and removed for cleaning and in-the-field repairs



Trans-Care Rescue - Ice Rescue Training



TRAINING

TRANS-CARE RESCUE LTD. HAS BEEN PROVIDING PROFESSIONAL TRAINING TO WESTERN CANADIAN FIRE DEPARTMENTS AND INDUSTRY SINCE 1981



DURATION: 3.5 HOURS

▶ **TRAFFIC INCIDENT MANAGEMENT**

The goals of this program include training and following "Safe work procedures" as they are vital to protecting our lives at traffic incidents. Safe work procedures can reduce firefighter/responder deaths and injuries while operating at roadway incidents.

With distracted driving on the increase, driving too fast and unfavorable road conditions, safety is becoming something that requires a lot more training and practice. Emergency services across North America have been working to develop a unified traffic control plan.



DURATION: 8 HOURS

▶ **SCBA TRAINING**

This program is designed for Fire and Rescue Personnel who may be required to use Self Contained Breathing Apparatus under varied situations. The program is delivered over 8 hours including both theory and practical.

Course objectives include identify the types, components and safety features of the SCBA, as well as understanding their use and limitations. Students will practice the use of SCBA in obscured visibility, demonstrate emergency procedures to be used in the event of equipment failure, and more.

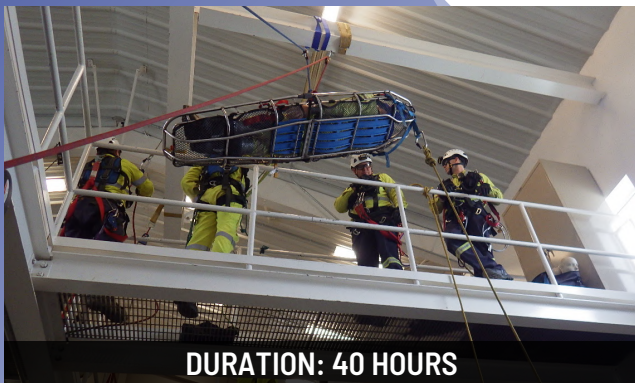


DURATION: 20 HOURS

▶ **GRAIN BIN RESCUE**

This course is for Fire & Rescue Departments who may find themselves in a situation where they would respond to an incident, where the victim is trapped in a grain storage facility or other agricultural related confined space.

This specialized course covers training and techniques, Provincial/Federal OH&S regulations, CSA Standards and associated legislation pertaining to grain bin rescue. Participants will understand the physical and environmental hazards encountered by victims and rescuers during a grain bin rescue operation, as well as how to identify proper techniques to protect themselves and the casualty.



DURATION: 40 HOURS

▶ **RURAL FIRE TECHNICAL ROPE RESCUE**

Upon completion students will be able to understand the Federal/Provincial OH&S Regulations, command structure and be able to develop standard operating procedures required for technical rope rescue situations.

During the practical portion of this course, students will be given technical rescue situations and will be required to demonstrate proper rigging techniques for basket stretcher, SKED device for horizontal, vertical lifts/lowers and more.



DURATION: 20 HOURS

▶ TRENCH RESCUE

This program is designed to educate rescue personnel on the proper safety procedures to use when responding to the trench rescue situations. Too often responders are not aware of the dangers involved with trench rescue; putting their own life at risk and all too often causing more physical harm to the victim.

This is a 20-hour **hands-on** program with minimal class time. Participants should have a good working knowledge of hand tools, knots, and ropes.



DURATION: 16 HOURS

▶ ICE RESCUE

This course is designed for anyone involved in emergency services that may respond to a situation where someone has fallen through the ice or is in trouble in open water conditions.

Participants will cover scene assessments, rescue techniques and equipment, surface ice rescue field training, working on ice, ice/water safety equipment and practical on ice/in water training.

This course exceeds the Standards set in NFPA 1670 and 1006 Guidelines for Cold Water/Ice Rescue.

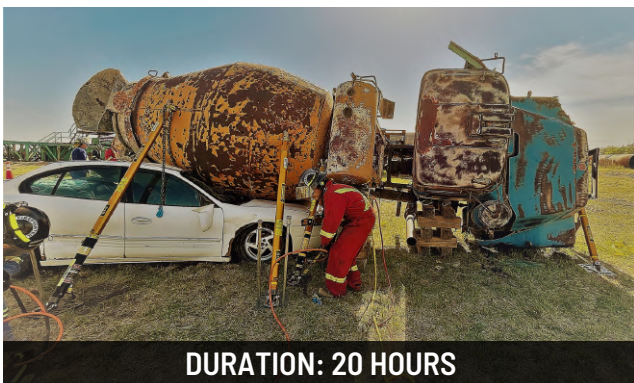


DURATION: 20 HOURS

▶ VEHICLE EXTRICATION (LEVEL I)

Rescuers should be properly trained in the care, use and maintenance of their rescue equipment. Proper training ensures that rescuers and their equipment perform when they are needed. This course is designed to provide rescue personnel with the skills necessary to perform a vehicle extrication/rescue in a safe and expedient manner while using a variety of tools and techniques.

Utilizing the incident command system, students are given the opportunity to use extrication equipment in a safe and controlled environment under the guidance of a skilled, experienced instructor.



DURATION: 20 HOURS

▶ VEHICLE EXTRICATION (HEAVY RESCUE)

This course covers the subject of extrication, dealing with heavy motor vehicles including buses and trucks. Directed toward urban/rural agencies that are involved with vehicle rescue and have the potential to be involved in a heavy truck/bus extrication situation.

We believe in providing professional training with a real world perspective. Students are given advanced situations where heavy lifting and advanced extrication may be required. Students learn by performing hands on extrication with "real world" entrapment scenarios.

CONTACT US TODAY TO SECURE YOUR TRAINING DATES

PHONE: (306) 283-4496 OR EMAIL: RECEPTION@TRANS-CARERESCUE.COM





TOLL FREE: 1-800-717-3728
LOCAL: (306) 283-4496

TRANS-CARE RESCUE LTD.
225 SERVICE ROAD WEST
P.O. BOX 935
LANGHAM, SK S0K 2L0



SALES@TRANS-CARERESCUE.COM
WWW.TRANS-CARERESCUE.COM

